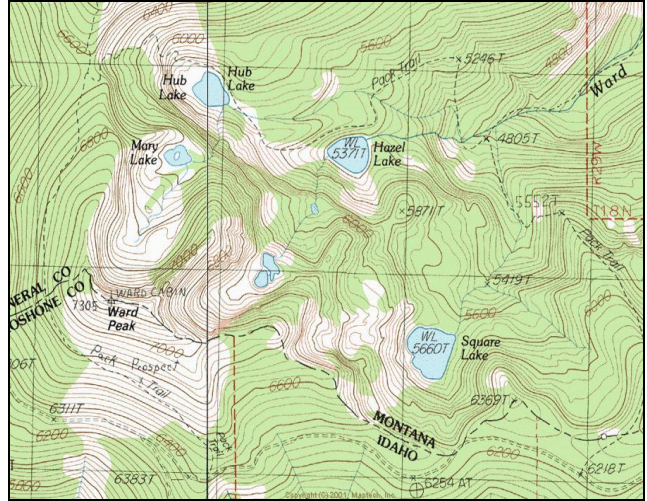


Square Lake



Description: Square Lake is a moderately sized (12.4 acres), semi-remote glacial cirque lake located near the Idaho border in the Ward Creek (St. Regis River) drainage at 5,660 ft elevation. The lake lies on the Lolo National Forest (Superior Ranger District).

Location: T17N, R30W, Section 1; Latitude N 47.2640°, Longitude W115.3600°; Nearest Town: St. Regis, MT

Access: Square Lake can be accessed by two routes. The first is to take USFS Road #282 (Little Joe Creek Road) from St. Regis, MT to the Idaho border. At the Idaho border, take USFS Road #391 northwest ~ 4.5 miles to a large parking area with a steep trail (<0.5 mile) to the lake. The second option is to take Exit 26 off Interstate Highway 90 west of St. Regis, MT to USFS Road #889 (Ward Creek Road). Take this road ~ 6.3 miles to USFS Trail #262. Approximately 1.6 miles up the trail, it will cross a small drainage which is the outlet of Square Lake. The lake lies ~ 0.5 mile up this drainage via an off-trail hike.

Campsites and Use: Square Lake lies in a semi-remote setting that receives light use. There are two campsites with fire rings at the lake. 'Leave no trace' camping and recreating is encouraged in this area.

Angling Opportunity: Square Lake supports a population of westslope cutthroat trout that has limited natural reproduction and is supplemented by stocking. Shoreline topography and access lends well to shoreline angling.

Stocking History: Square Lake has been stocked five times with westslope cutthroat trout since 1971. It was also stocked once prior (1953) with an unknown strain of cutthroat trout. There is no record of any other fish species stocked in Square Lake. Stocking with westslope cutthroat trout will likely continue every 7-10 years in the future.

Angling Pressure: Estimated angling pressure from Montana state-wide mail surveys in 1995-2005 was zero. Although the lake is known to receive some angling pressure, none of the randomly surveyed anglers that responded had visited the lake.

Other Nearby Lakes: There are several other lakes in the area. Hazel Lake and Hub Lake are less than one mile north-northwest of Square Lake, but getting to them will require off-trail hiking. The easiest access would be to return to Trail # 262 below Square Lake and travel northwest to Trail # 280, which leads to both lakes. Clear Lake is just over 2 miles west-northwest of Square Lake. Accessing this lake requires ascending to USFS Road #391, going west, and descending to the lake via a short, steep trail.



**Montana Fish,
Wildlife & Parks**

Square Lake

Watercode: 05-9568

Survey Date: 8/24/2004

Area = 12.4 acres

Volume = 341.9 acre/feet

Contour Interval = 10 feet

Max. depth = 64 feet

