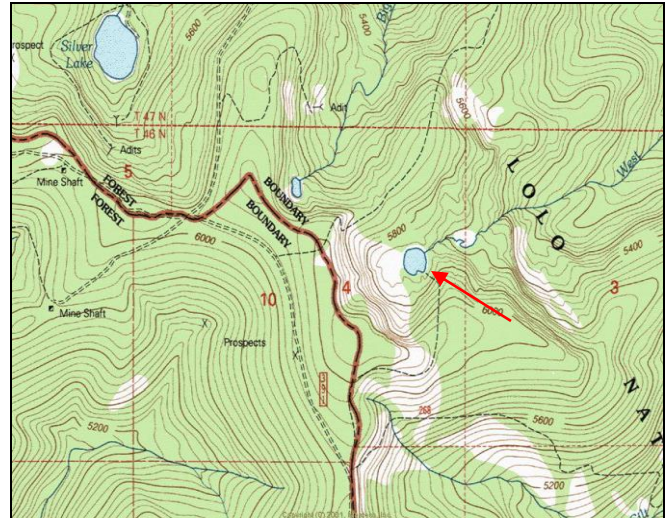
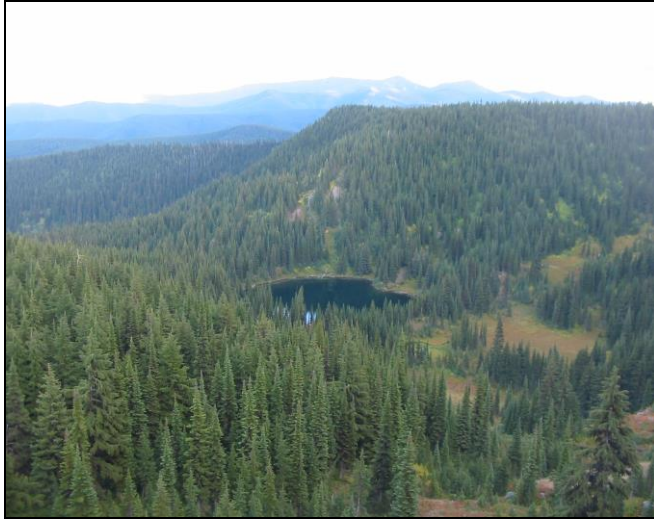


# Tadpole Lake



**Description:** Tadpole Lake is a small (3.1 acres), semi-remote glacial cirque lake located near the Idaho border in the Big Creek (St. Regis River) drainage at 5,718 ft elevation. The lake lies on the Lolo National Forest (Superior Ranger District).

**Location:** T18N, R31W, Section 4; Latitude N47.3503°, Longitude W115.5440°; Nearest Town: St. Regis, MT

**Access:** The easiest way to access Tadpole Lake is to take the Saltese Exit off Interstate Highway 90 west of St. Regis, MT. Take USFS Road #305 until you reach the Idaho border and USFS Road #391 (~ 5.1 miles). From here, there are two options. The first is to proceed southeast on USFS Road #391 for 0.3 miles to USFS Trail #255. Hike Trail #255 northeast 0.5 mile, then hike off-trail to the lake. The second is to go southeast on USFS Road #391 for one mile, then hike a mile-long trail north to the lake. Be sure to not accidentally hike Trail #1268, which heads immediately northeast off the ridge.

**Campsites and Use:** Tadpole Lake lies in a semi-remote setting that receives moderate use. There is an established trail around the lake with multiple campsites and fire rings. 'Leave no trace' camping and recreating is encouraged.

**Angling Opportunity:** Tadpole Lake supports a westslope cutthroat trout population that has limited natural reproduction and is supplemented with periodic stocking. Shoreline topography and access lends well to shoreline angling from most of the lake's perimeter.

**Stocking History:** Tadpole Lake has been stocked periodically with westslope cutthroat trout since 1977. There are no stocking records for Tadpole Lake prior to 1977. Stocking with westslope cutthroat trout will likely occur every 7-10 years in the future.

**Angling Pressure:** Estimated angling pressure from Montana state-wide mail surveys in 1995-2005 was very low and averaged just 8 angler-days per year.

**Other Nearby Lakes:** There is one other fish-bearing lake in the immediate vicinity of Tadpole Lake. Silver Lake is 1.1 miles northwest of Tadpole Lake. Taking USFS Road #9122 from USFS Road #305 will take you right to the lake. Visiting other lakes in the area would require either returning to Interstate Highway 90 or driving USFS Road #391 for a long distance to access a different stream drainage.



**Montana Fish,  
Wildlife & Parks**

## Tadpole Lake

Watercode: 05-9640

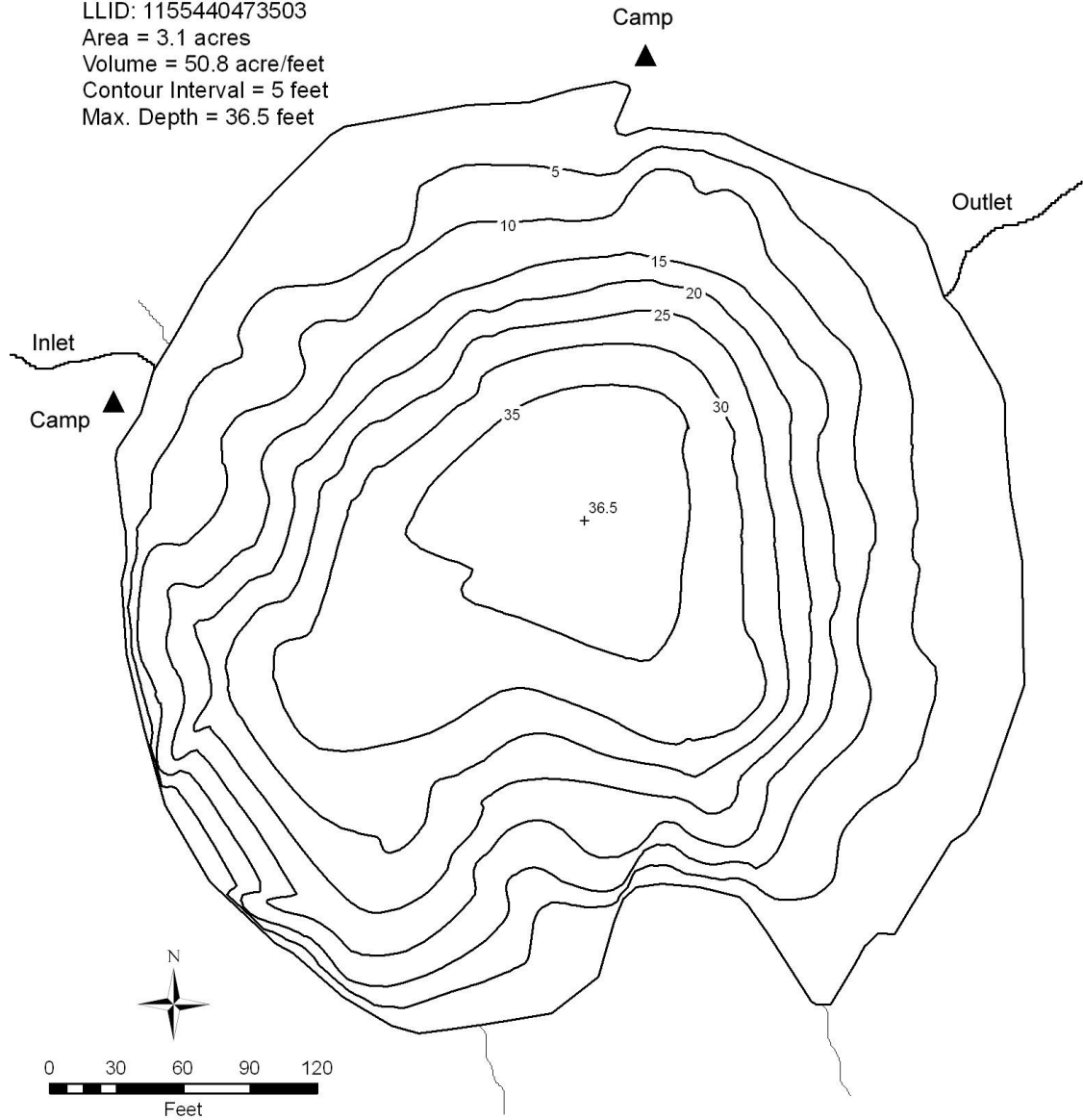
LLID: 1155440473503

Area = 3.1 acres

Volume = 50.8 acre/feet

Contour Interval = 5 feet

Max. Depth = 36.5 feet



Data Source:  
Depth and perimeter points collected with recreational  
grade GPS unit and processed with ESRI ArcGIS 3D Analyst.  
Map produced by:  
Montana Fish, Wildlife & Parks  
Information Management Unit  
490 N. Menden  
Kalispell, Montana 59901  
June 14, 2006

