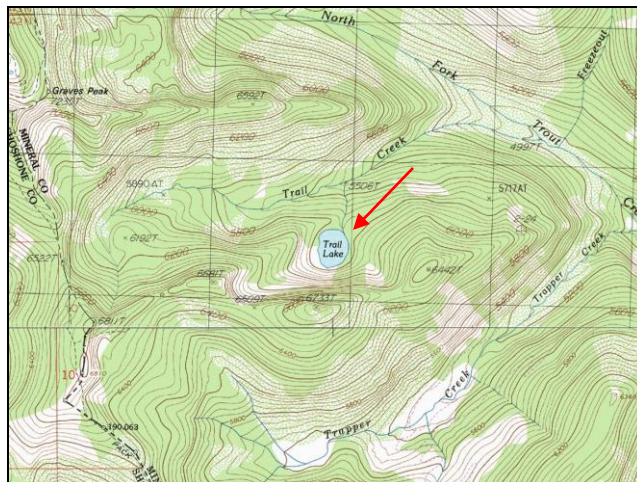


Trail Lake



Description: Trail Lake is a moderately sized (11.5 acres), remote forested cirque lake located near the Idaho border in the North Fork Trout Creek drainage at 5,777 ft elevation. The lake lies on the Lolo National Forest (Superior Ranger District).

Location: T14N, R227W, Section 5; Latitude N 47.0051°, Longitude W115.0420°; Nearest Town: Superior, MT

Access: Take USFS Road #250 (Trout Creek Road) out of Superior, Montana for ~18 miles to USFS Road #388. Take this road ~ 2.8 miles to where it crosses the North Fork of Trout Creek. The trailhead for USFS Trail #156 lies at this crossing. Take Trail #156 ~ 2.2 miles to Trail Lake. The first ~ 1.5 miles of the trail is ORV accessible.

Campsites and Use: Trail Lake lies in a semi-remote setting that receives moderate use. There is a trail around the lake and multiple campsites with fire rings. 'Leave no trace' camping and recreating is encouraged in this area.

Angling Opportunity: Trail Lake supports a self-sustaining population of brook trout. Brook trout harvest is encouraged. Shoreline topography and access lends well to shoreline angling from most of the lake's perimeter.

Stocking History: Trail Lake has not been stocked since 1964, when ~ 2,000 rainbow trout were planted. Prior to that, 10,000 brook trout were planted in 1933, and 100,000 cutthroat trout were planted in 1931. There are no plans to stock Trail Lake in the future.

Angling Pressure: Estimated angling pressure from Montana state-wide mail surveys in 1995-2005 was moderate and averaged 57 angler-days per year.

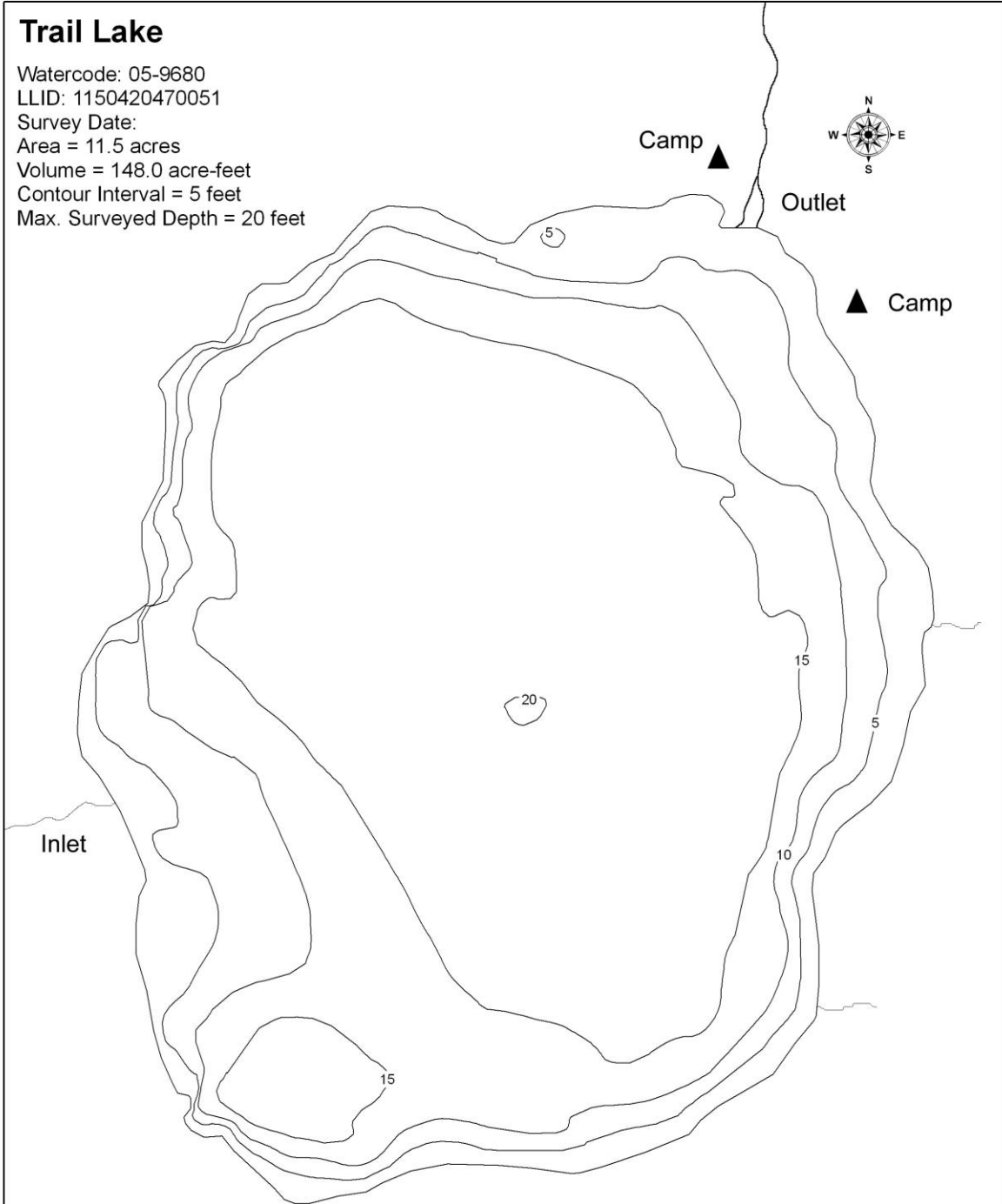
Other Nearby Lakes: There are no other lakes in the immediate vicinity of Trail Lake. The nearest lake is Hoodoo Lake, which lies ~ 2.5 miles southeast of Trail Lake. Accessing Hoodoo Lake requires returning to USFS Road #250 and hiking either USFS Trail #111, or Trail #738 and then Trail #111. The Oregon Lakes are ~ 4 miles northwest of Trail Lake. To reach them, drive to the Cedar Creek drainage via USFS Roads #388 and #320, then hike Trail #109 to the lakes.



**Montana Fish,
Wildlife & Parks**

Trail Lake

Watercode: 05-9680
LLID: 1150420470051
Survey Date:
Area = 11.5 acres
Volume = 148.0 acre-feet
Contour Interval = 5 feet
Max. Surveyed Depth = 20 feet



Data Source:
Depth and perimeter points collected with recreational
grade GPS unit and processed with ESRI ArcGIS 3D Analyst.
Map produced by:
Montana Fish, Wildlife & Parks
Information Management Unit
490 N. Meridian
Kalispell, Montana 59901
November 13, 2006

