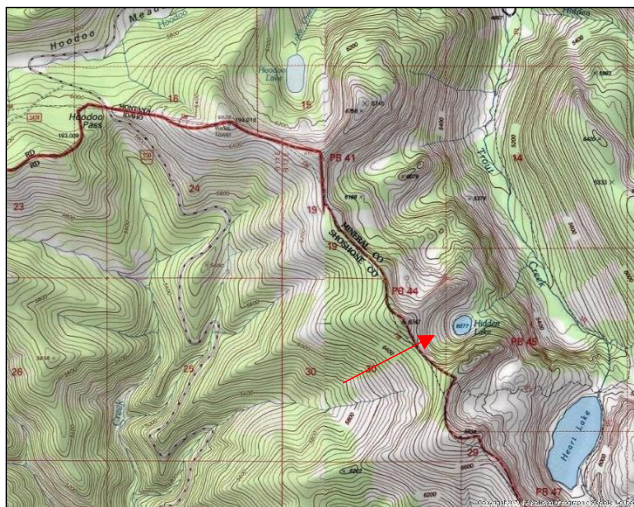
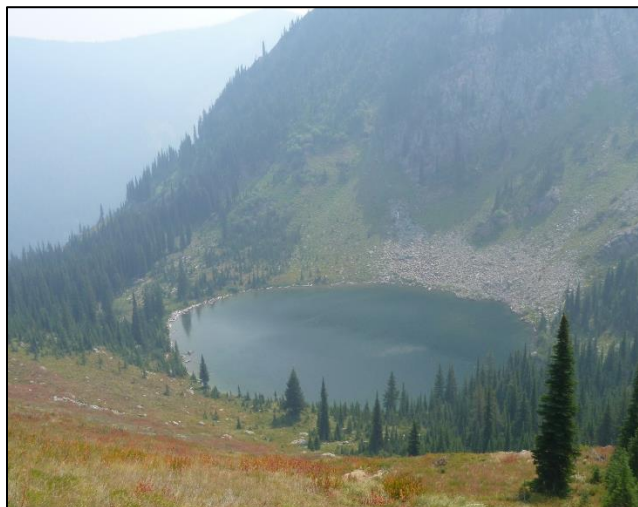


Hidden Lake (Trout Creek)



Description: Hidden Lake is a small (5.7 acres), semi-remote glacial cirque lake located near the Idaho border in the South Fork Trout Creek drainage at 6,077 ft elevation. The lake lies on the Lolo National Forest (Superior Ranger District).

Location: T14N, R26W, Section 23B; Latitude N46.95817°, Longitude W 114.98483°. Nearest Town: Superior, MT.

Access: Hidden Lake is most easily accessed by following USFS Rd #250 (Trout Creek Road) from Superior, MT. From USFS Rd #250, hike USFS Trail #738 (Stateline National Recreation Trail) east-southeast along the Idaho border from the top of Hoodoo Pass (USFS Rd # 250), then hike off-trail down to the lake. The hike down to the lake is a 600 ft drop in elevation with moderate slope. This route is ~ 3 miles from Hoodoo Pass to the lake.

Campsites and Use: Hidden Lake lies in a semi-remote setting that receives light use. There is a light trail around the northern half of the lake with one campsite near the outlet. 'Leave no trace' camping and recreating is encouraged.

Angling Opportunity: Hidden Lake supports a stunted brook trout population that is self-sustaining. Harvest of brook trout is encouraged. Shoreline topography and access lends well to shoreline angling.

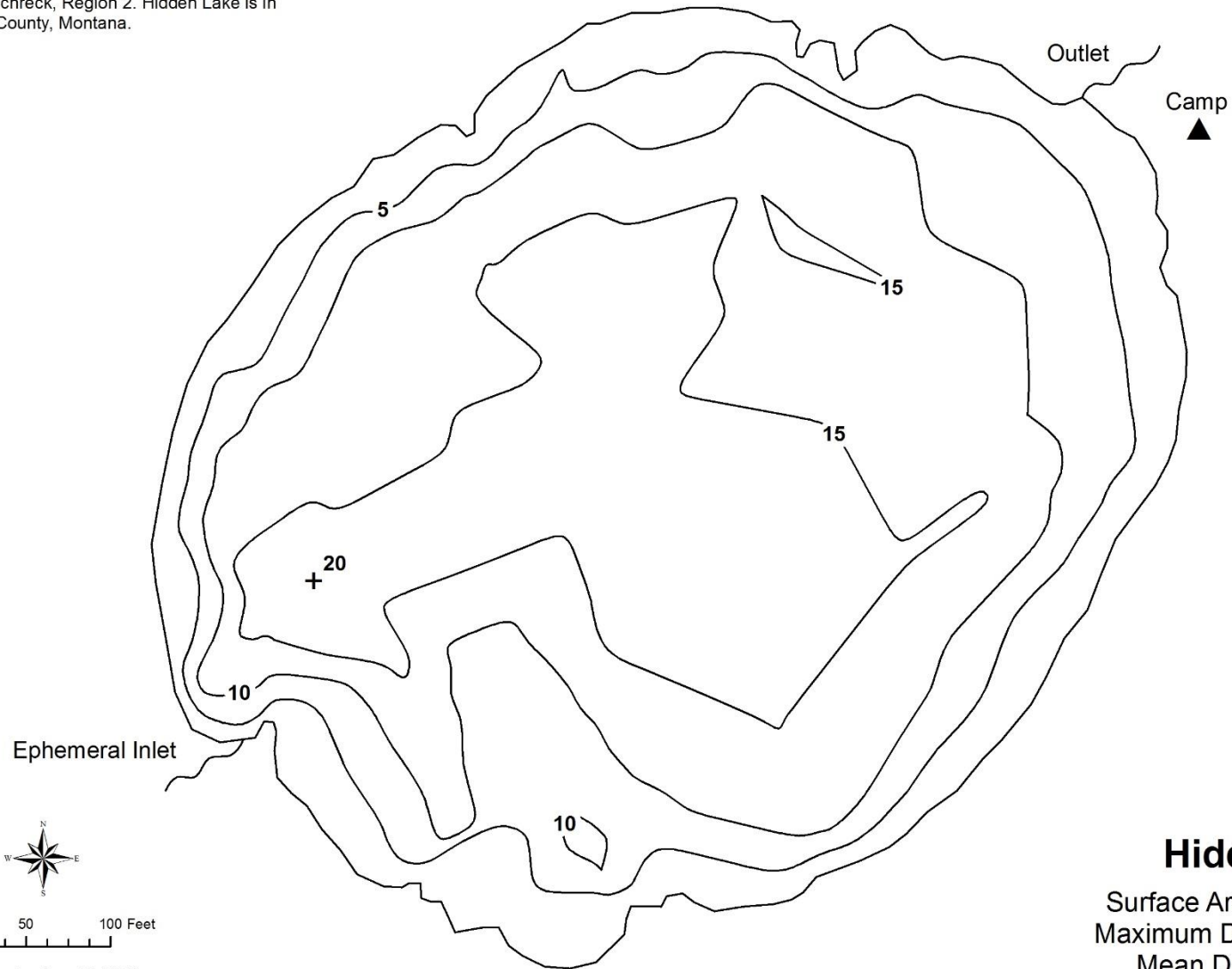
Stocking History: There are no stocking records for Hidden Lake. However, the lake supports introduced, self-sustaining brook trout that were likely planted in the mid-1900s.

Angling Pressure: Angling pressure at Hidden Lake is light and infrequent. Estimated angling pressure from Montana state-wide mail surveys in 2005-2013 was zero.

Other Nearby Lakes: There are several other lakes near Hidden Lake: Heart Lake, Pearl Lake, and Dalton Lakes all lie 1-3 miles to the southeast. Accessing them from Hidden lake requires following the Stateline Trail (USFS Trail #738). Hoodoo Lake is located 2.4 miles northwest of Hidden Lake near Hidden Pass.



Lake volume and 5 foot contours calculated in ArcMap using 3-D Analyst and 124 GPS survey points from field measurements collected by Will Schreck, Region 2. Hidden Lake is in Mineral County, Montana.



Hidden Lake

Surface Area: 5.7 acres
Maximum Depth: 20 feet
Mean Depth: 9.1 feet
Volume: 60.7 acre-feet
LLID: 1149840469582

W. Schreck - June 17, 2016

