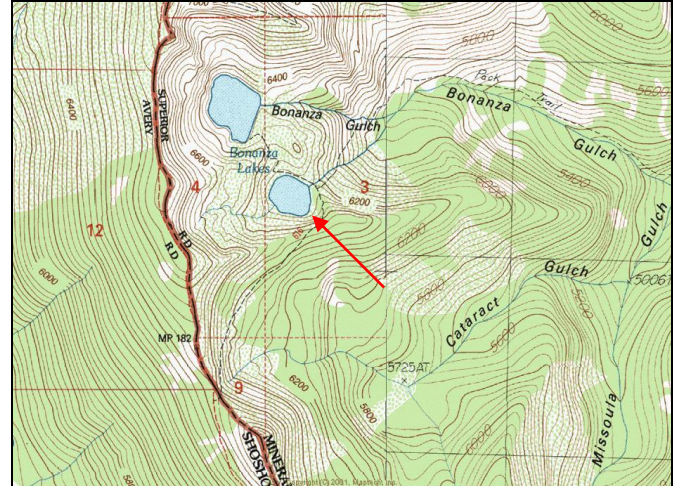


# Lower Bonanza Lake



**Description:** Lower Bonanza Lake is a small (8.7 acres), remote glacial cirque lake located near the Idaho border in the Cedar Creek drainage at 6,253 ft elevation. The lake lies on the Lolo National Forest (Superior Ranger District).

**Location:** T15N, R28W, Section 3; Latitude N47.0868°, Longitude W 115.1320°; Nearest Town: Superior, MT

**Access:** Access to Lower Bonanza Lake can easily be obtained by either of two routes. One is by taking USFS Road #320 (Cedar Creek Road) from Superior, Montana for approximately 19 miles. Turn right on USFS Road #7763 near the Oregon Lakes trailhead. Take Road #7763 north 1.7 miles to USFS Trail #616. Two miles up the trail; you will find Lower Bonanza Lake. The trail is moderately difficult with some steep stretches. The other option is to continue on USFS Road #320 to the Stateline National Recreation Trail (#738) and hike 1.5 miles northwest to Trail #616, then hike 0.8 miles down Trail #616 to the lake. This route will have the advantage of being well traveled, and is relatively flat for the first two-thirds of the hike.

**Campsites and Use:** Lower Bonanza Lake lies in a remote setting that receives moderate use. However, there is a trail around much of the lake and a campsite with a fire ring. 'Leave no trace' camping and recreating is encouraged.

**Angling Opportunity:** Lower Bonanza Lake supports a brook trout population that has a high rate of natural reproduction. Brook trout harvest is encouraged. Shoreline topography and access lends well to shoreline angling.

**Stocking History:** Lower Bonanza Lake has not been stocked in recent history. It was stocked with brook trout in 1933, and again in 1942. These are the only records of stocking in Lower Bonanza Lake.

**Angling Pressure:** Estimated angling pressure from Montana state-wide mail surveys in 1995-2005 was moderate for an alpine lake and averaged 157 angler -days per year.

**Other Nearby Lakes:** There are several other lakes near Lower Bonanza Lake. Upper Bonanza Lake is less than 0.25 mile northwest of Lower Bonanza, and is easily accessed from Lower Bonanza by a trail. Missoula Lake is just a short hike down from a USFS campground located on USFS Road #320 near the Idaho border. The Oregon Lakes are less than one mile south of the junction of USFS Roads #320 and #7763. A short (one-half mile) road going south from this junction takes you to the trailhead. Lost Lake is less than one mile north of Lower Bonanza Lake, although getting to it from here would require off-trail hiking over steep terrain.



**Montana Fish,  
Wildlife & Parks**

## Lower Bonanza Lake

Watercode: 05-8464

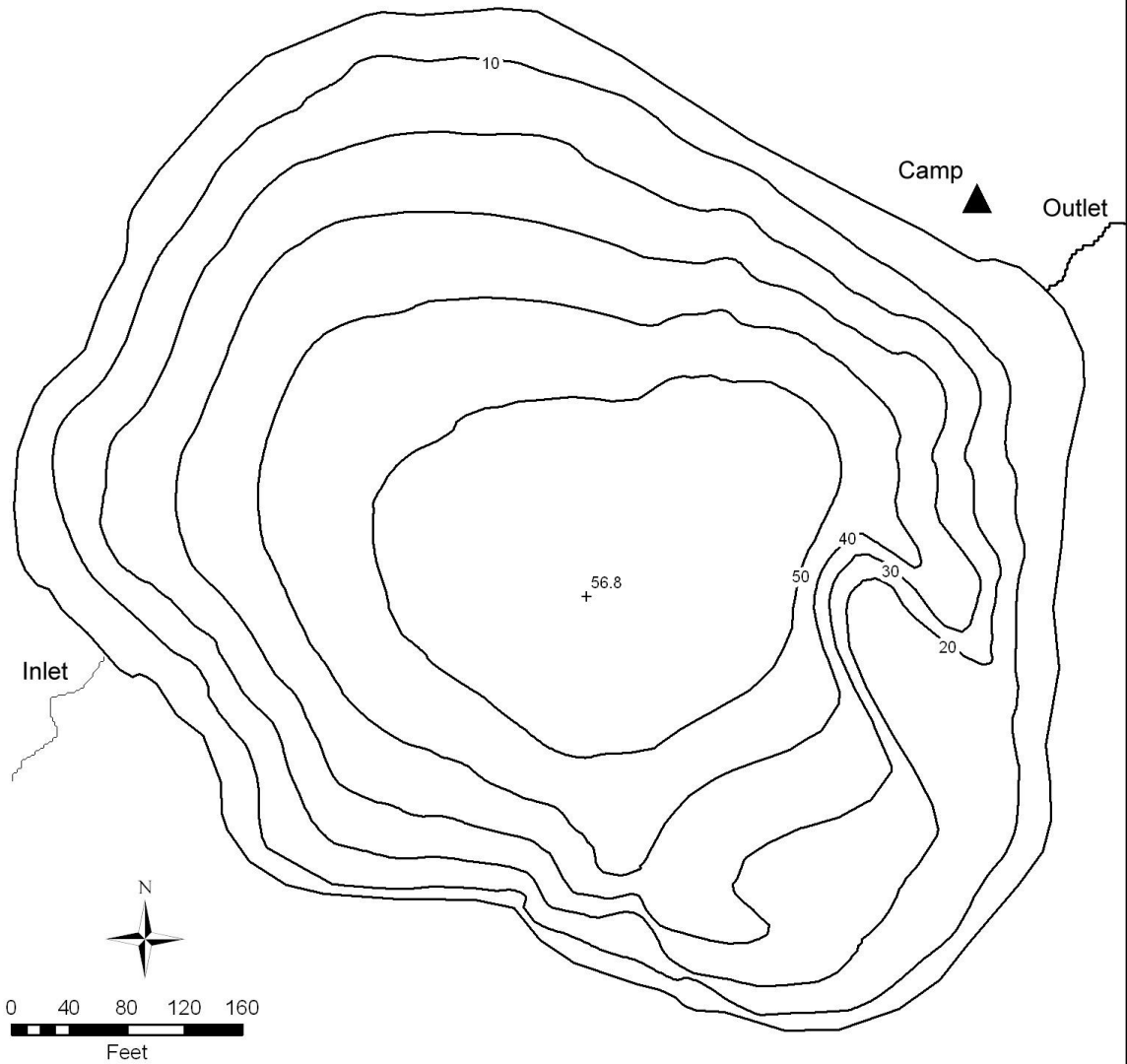
LLID: 1151320470868

Area = 8.7 acres

Volume = 248.9 acre/feet

Contour Interval = 10 feet

Max. Depth = 56.8 feet



Data Source:  
Depth and perimeter points collected with recreational  
grade GPS unit and processed with ESRI ArcGIS 3D Analyst.  
Map produced by:  
Montana Fish, Wildlife & Parks  
Information Management Unit  
490 N. Meridian  
Kalispell, Montana 59901  
June 14, 2006

