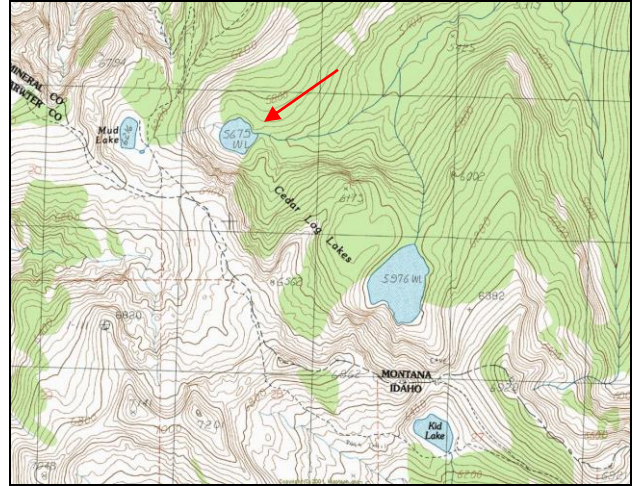


North Cedar Log Lake



Description: North Cedar Log Lake is a moderate sized (14.2 acres), remote glacial cirque lake located near the Idaho border in the West Fork Fish Creek drainage at 5,675 ft elevation. The lake lies on the Lolo National Forest (Ninemile Ranger District) in the proposed Great Burn Wilderness Area.

Location: T12N, R26W, Section 14; Latitude N46.7971°, Longitude W 114.8320°; Nearest Town: Alberton, MT

Access: The easiest access to North Cedar Log Lake from Montana is to take USFS Road #7734 (off USFS Road #343 – South Fork Fish Creek) to the Schley Mountain trailhead. Take USFS Trail #110 southwest approximately 3.5 miles to the Stateline National Recreation Trail (#738), then take Trail #738 west past Kid Lake (Idaho) another 3.5 miles to Trail #121. From this junction, North Cedar Log Lake is about 0.25 miles to the northeast. Take Trail #121 north a few hundred yards, and Mud Lake will be on west side of the trail. From near the campsite on Mud Lake, there is a steep foot trail down to North Cedar Log Lake.

Campsites and Use: North Cedar Log Lake lies in a remote setting that receives light use. However, there is a campsite with a fire ring on the north side of the lake. ‘Leave no trace’ camping and recreating is essential in this area as it is proposed wilderness.

Angling Opportunity: North Cedar Log Lake supports a cutthroat trout population that appears to be comprised of both Yellowstone and westslope strains, with hybridization likely. Shoreline topography and access lends well to shoreline angling.

Stocking History: North Cedar Log Lake has been stocked only with westslope cutthroat trout in recent history, but was historically stocked with Yellowstone cutthroat trout. Since 1995, the lake was planted only in 2000. There are no plans for continued stocking as the cutthroat trout population appears to be self-sustaining.

Angling Pressure: Angling pressure data have been collected on the Cedar Log Lakes, but these data do not distinguish between the two lakes. For the combined Cedar Log Lakes, estimated angling pressure from Montana state-wide mail surveys in 1995-2005 was low and averaged 121 angler-days per year.

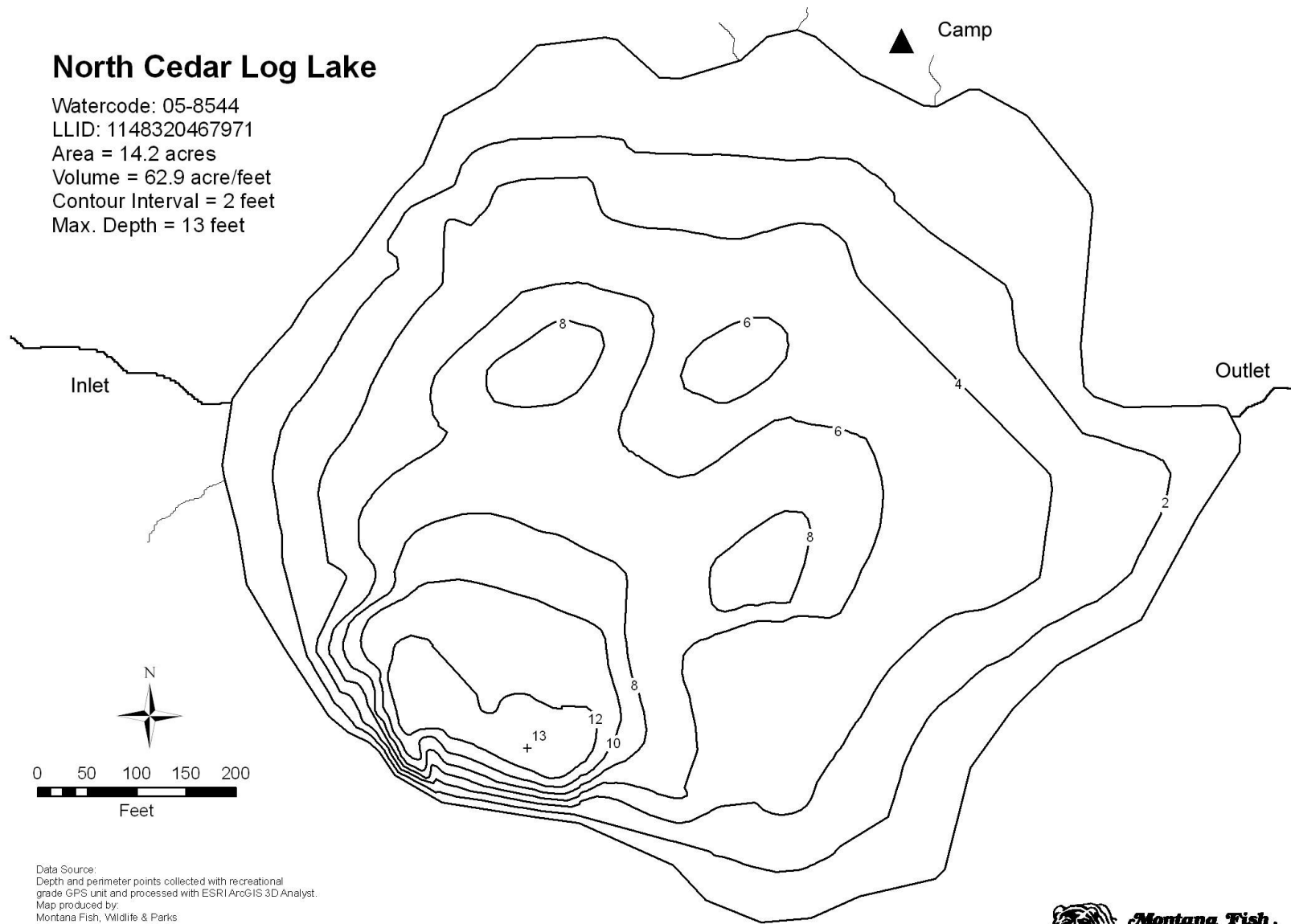
Other Nearby Lakes: There are a few other lakes near North Cedar Log Lake. South Cedar Log Lake is less than one mile southeast of North Cedar Log. It can be accessed by a steep trail down from USFS Trail #738. Kid Lake (Idaho) is 1.5 miles southeast of North Cedar Log Lake, and lies directly adjacent to Trail #738. Surveyor Lake can be accessed by a ~0.25 mile foot trail off of USFS Road #7734.



**Montana Fish,
Wildlife & Parks**

North Cedar Log Lake

Watercode: 05-8544
LLID: 1148320467971
Area = 14.2 acres
Volume = 62.9 acre/feet
Contour Interval = 2 feet
Max. Depth = 13 feet



Data Source:
Depth and perimeter points collected with recreational
grade GPS unit and processed with ESRI ArcGIS 3D Analyst.
Map produced by:
Montana Fish, Wildlife & Parks
Information Management Unit
490 N. Meridian
Kalispell, Montana 59901
June 14, 2006

