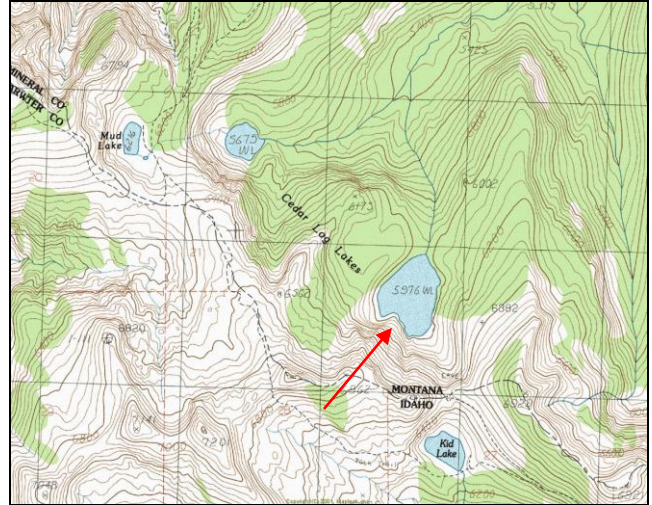


South Cedar Log Lake



Description: South Cedar Log Lake is a large (40.6 acres), remote glacial cirque lake located near the Idaho border in the West Fork Fish Creek drainage at 5,976 ft elevation. The lake lies on the Lolo National Forest (Ninemile Ranger District) in the proposed Great Burn Wilderness Area.

Location: T12N, R26W, Section 24; Latitude N46.7971°, Longitude W 114.8320°; Nearest Town: Alberton, MT

Access: Access to this lake from Montana is difficult, but the most common route is to take USFS Road #7734 (off USFS Road #343 – South Fork Fish Creek) to the Schley Mountain trailhead. Hike USFS Trail #110 southwest approximately 3.5 miles to the Stateline National Recreation Trail (#738). Take Trail #738 west 1.3 miles to Kid Lake (Idaho) and ascend to the saddle directly north of (above) Kid Lake. South Cedar Log Lake is visible from the saddle and there is an unofficial trail down to the lake.

Campsites and Use: South Cedar Log Lake lies in a remote setting that receives light use. However, there is a campsite with a fire ring on the south side of the lake where the trail meets the lake. There is no established trail surrounding the lake. ‘Leave no trace’ camping and recreating is essential in this area as it is proposed wilderness.

Angling Opportunity: South Cedar Log Lake supports a self-sustaining population of Yellowstone cutthroat trout. Steep, brushy shoreline topography and lack of established trails make shoreline angling difficult in most areas.

Stocking History: South Cedar Log Lake was historically stocked with Yellowstone cutthroat trout (year unknown). Further stocking has been deferred as the wild Yellowstone cutthroat trout population has maintained adequate natural reproduction and is self-sustaining.

Angling Pressure: Angling pressure data have been collected on the Cedar Log Lakes, but these data do not distinguish between the two lakes. For the combined Cedar Log Lakes, estimated angling pressure from Montana state-wide mail surveys in 1995-2005 was low and averaged 121 angler-days per year.

Other Nearby Lakes: There are a few other lakes near South Cedar Log Lake. North Cedar Log Lake is less than one mile northwest of South Cedar Log. It can be accessed by a steep trail down from USFS Trail #121 at Mud Lake. Kid Lake (Idaho) is one half mile south of South Cedar Log, and Trail #738 passes right by it. Surveyor Lake lies just off USFS Road #7734 and can be accessed by a short unofficial trail (<0.5 mile) directly off this road.



**Montana Fish,
Wildlife & Parks**

South Cedar Log Lake

Watercode: 05-8544

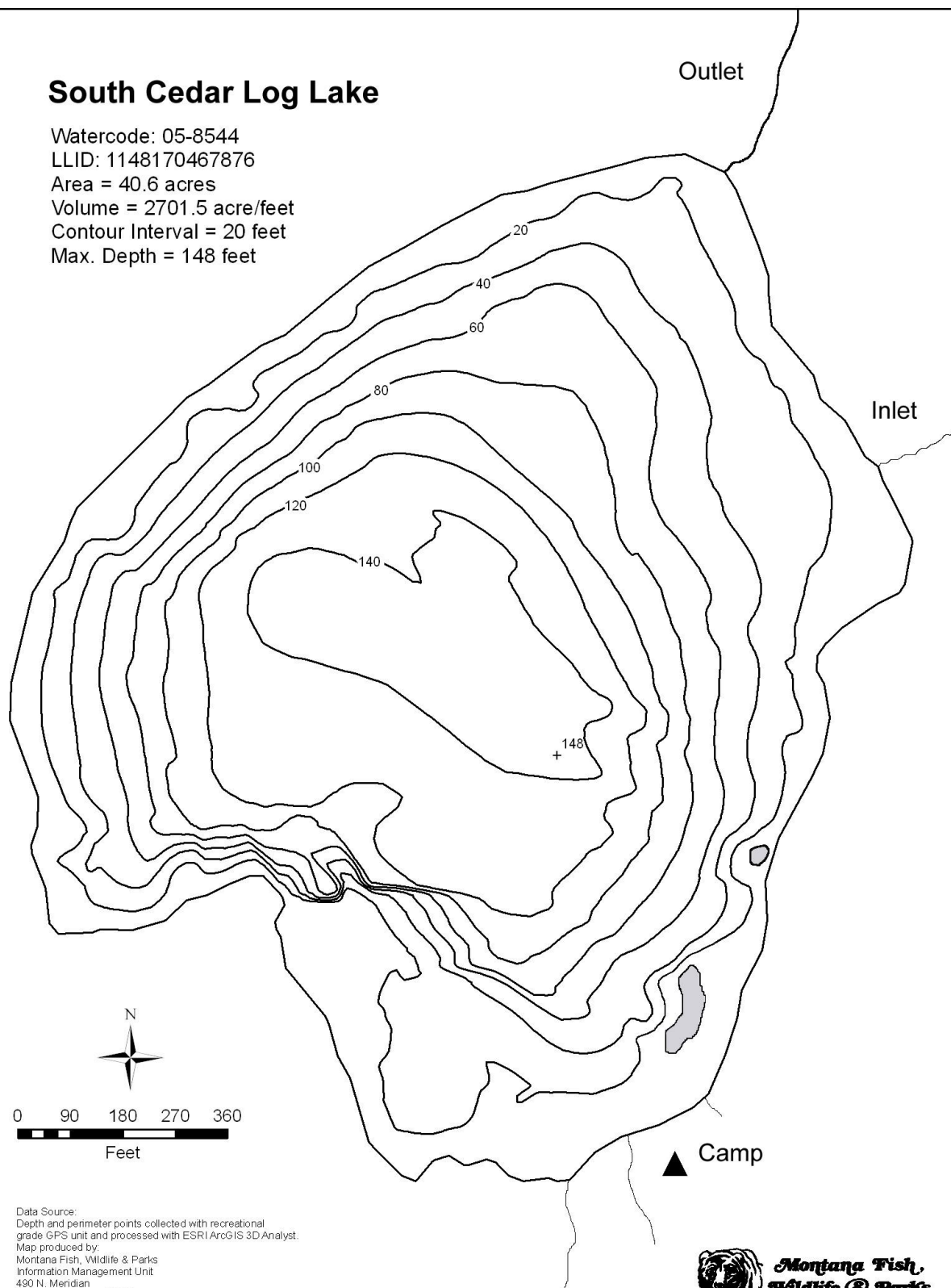
LLID: 1148170467876

Area = 40.6 acres

Volume = 2701.5 acre/feet

Contour Interval = 20 feet

Max. Depth = 148 feet



Data Source:
Depth and perimeter points collected with recreational
grade GPS unit and processed with ESRI ArcGIS 3D Analyst.
Map produced by:
Montana Fish, Wildlife & Parks
Information Management Unit
490 N. Meridian
Kalispell, Montana 59901
June 14, 2006

