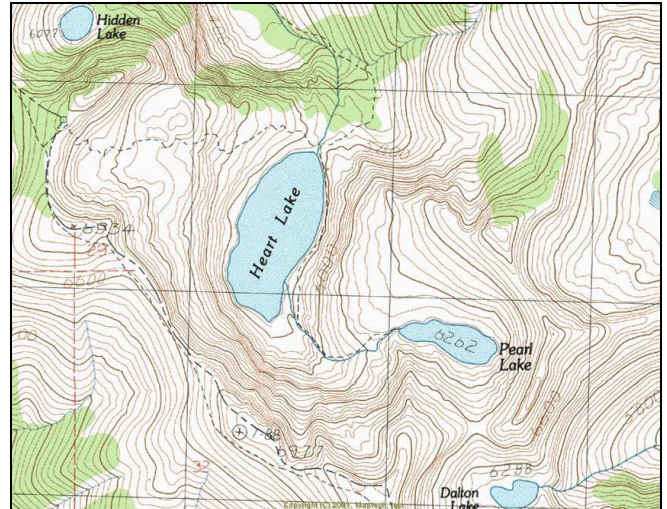


# Heart Lake (Trout Creek)



**Description:** Heart Lake is a large (61.6 acre), deep glacial trough lake located near the Idaho border in the south Fork Trout Creek drainage at approximately 5,760 ft elevation. The lake lies on the Lolo National Forest (Superior Ranger District).

**Location:** T14N, R27W, Sections 23,26; Latitude N 46.9492°, Longitude W 114.9710°; Nearest Town: Superior, MT

**Access:** Access to Heart Lake can most easily be obtained by taking USFS Road #250 (Trout Creek Road) near Superior, MT. From Road #250, there are two options to hike. One option is to hike USFS Trail #171 to Heart Lake. This route is approximately 2.5 miles and follows the south fork of Trout Creek. It is generally a gentle climb, with a few stretches of switchbacks. The other option is to take Trail #738 (Stateline National Recreation Trail) east-southeast, along the Idaho border, from the top of Hoodoo Pass (via Road #250). This route is longer (~ 3.6 miles) and has a fair amount of uphill and downhill, but it offers great views of the North Fork Clearwater River (Idaho) drainage.

**Campsites and Use:** Heart Lake lies in a semi-remote setting that receives moderate use. There is an established trail around most of the lake with several campsites and fire rings. 'Leave no trace' camping and recreating is encouraged in this area.

**Stocking History:** Heart Lake has not been stocked in recent history. In 1931 it was stocked with 36,000 cutthroat trout. In 1942, it was stocked with 7,615 brown trout. At some point, it was also stocked with brook trout, which are now self-sustaining.

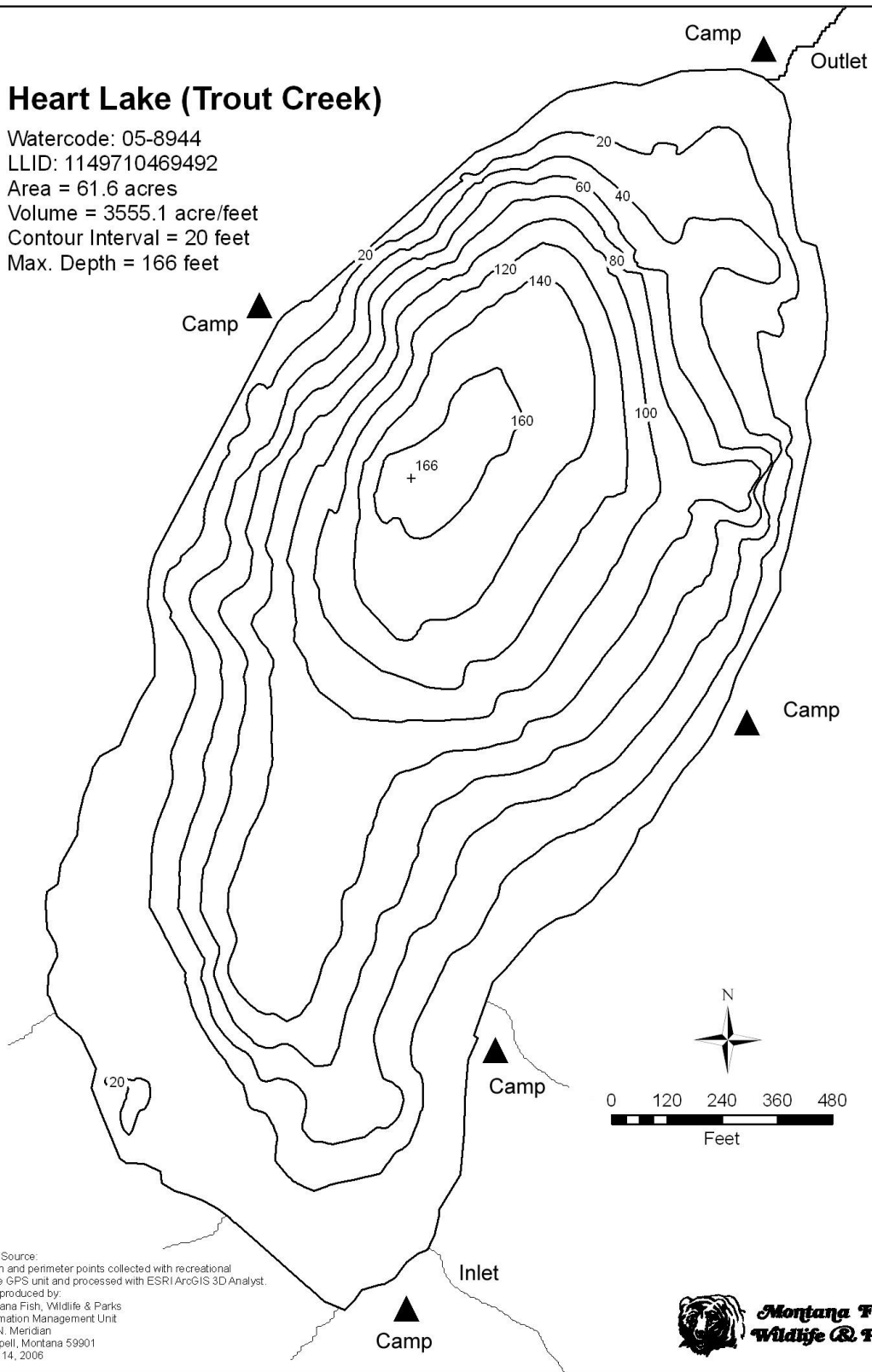
**Angling Pressure:** Estimated angling pressure from Montana state-wide mail surveys in 1995-2005 was low and averaged 58 angler-days per year.

**Angling Opportunity:** Heart Lake supports a dense population of wild brook trout. Brook trout harvest is encouraged. Shoreline topography and access lends well to shoreline angling. The lake also has a population of longnose suckers.

**Other Nearby Lakes:** There are two other lakes near Heart Lake. Pearl Lake is just southeast of Heart Lake, requiring a short but steep hike of less than one mile on USFS Trail #175. Dalton Lake is just beyond Pearl Lake (< 1 mile) on the opposite side of a saddle separating the Trout Creek and Fish Creek drainages. To reach Dalton Lake, continue on Trail #175 past Pearl Lake and onto the saddle south of Pearl Lake. From here, you can easily see and hike to Dalton Lake.

# Heart Lake (Trout Creek)

Watercode: 05-8944  
LLID: 1149710469492  
Area = 61.6 acres  
Volume = 3555.1 acre/feet  
Contour Interval = 20 feet  
Max. Depth = 166 feet



Data Source:  
Depth and perimeter points collected with recreational  
grade GPS unit and processed with ESRI ArcGIS 3D Analyst.  
Map produced by:  
Montana Fish, Wildlife & Parks  
Information Management Unit  
490 N. Meridian  
Kalispell, Montana 59901  
June 14, 2006

