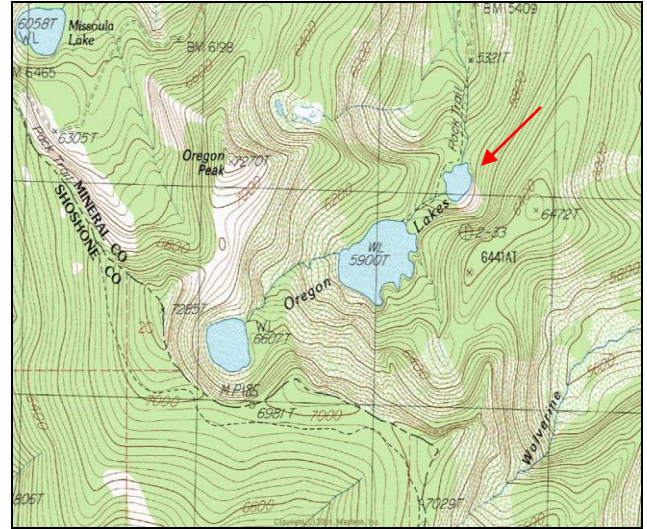


Lower Oregon Lake



Description: Lower Oregon Lake is a small (4.5 acres), remote valley trough lake located near the Idaho border in the Cedar Creek drainage at 5,739 ft elevation. It is the lowest in a chain of three lakes. The lake lies on the Lolo National Forest (Superior Ranger District).

Location: T15N, R27W, Section 13; Latitude N47.0569°, Longitude W115.0850°; Nearest Town: Superior, MT

Access: Access to Lower Oregon Lake can most easily be obtained by taking USFS Road #320 (Cedar Creek Road) from Superior, MT for ~ 19 miles. Opposite USFS Road #7763 is a short (0.5 mile) road that goes south to the head of USFS Trail #109. Lower Oregon Lake is less than 0.5 mile up this trail.

Campsites and Use: Lower Oregon Lake lies in a semi-remote setting that receives moderate use. There is a trail around much of the lake and a campsite with a fire ring. 'Leave no trace' camping and recreating is encouraged.

Angling Opportunity: Lower Oregon Lake supports a brook trout population that has a high rate of natural reproduction. Brook trout harvest is encouraged. Shoreline topography and access lends well to shoreline angling from about half of the lake's perimeter.

Stocking History: There is no record of Lower Oregon Lake ever being stocked. The only planting record for any of the Oregon Lakes is for *Middle* Oregon Lake, which was stocked with brook trout in 1950. It is likely that the lower lake was planted at the same time or that brook trout drifted down from the middle lake.

Angling Pressure: Estimated angling pressure from Montana state-wide mail surveys in 1995-2005 was moderate and averaged 79 angler-days per year.

Other Nearby Lakes: There are several other lakes near Lower Oregon Lake. Middle and Upper Oregon Lakes are both within one mile and are accessed by continuing up USFS Trail #109. The upper lake will require off-trail hiking through steep, brushy terrain. Missoula Lake is 1.5 miles west-northwest of Lower Oregon Lake and is accessed via a short hike down from a USFS campground located on USFS Road #320 near the Idaho border. The Bonanza Lakes are three miles northwest of Lower Oregon Lake. These lakes are accessed either off the Stateline National Recreation Trail (#738) above Missoula Lake or by taking USFS Road #7763 and Trail #616.

Lower Oregon Lake

Watercode: 05-9343

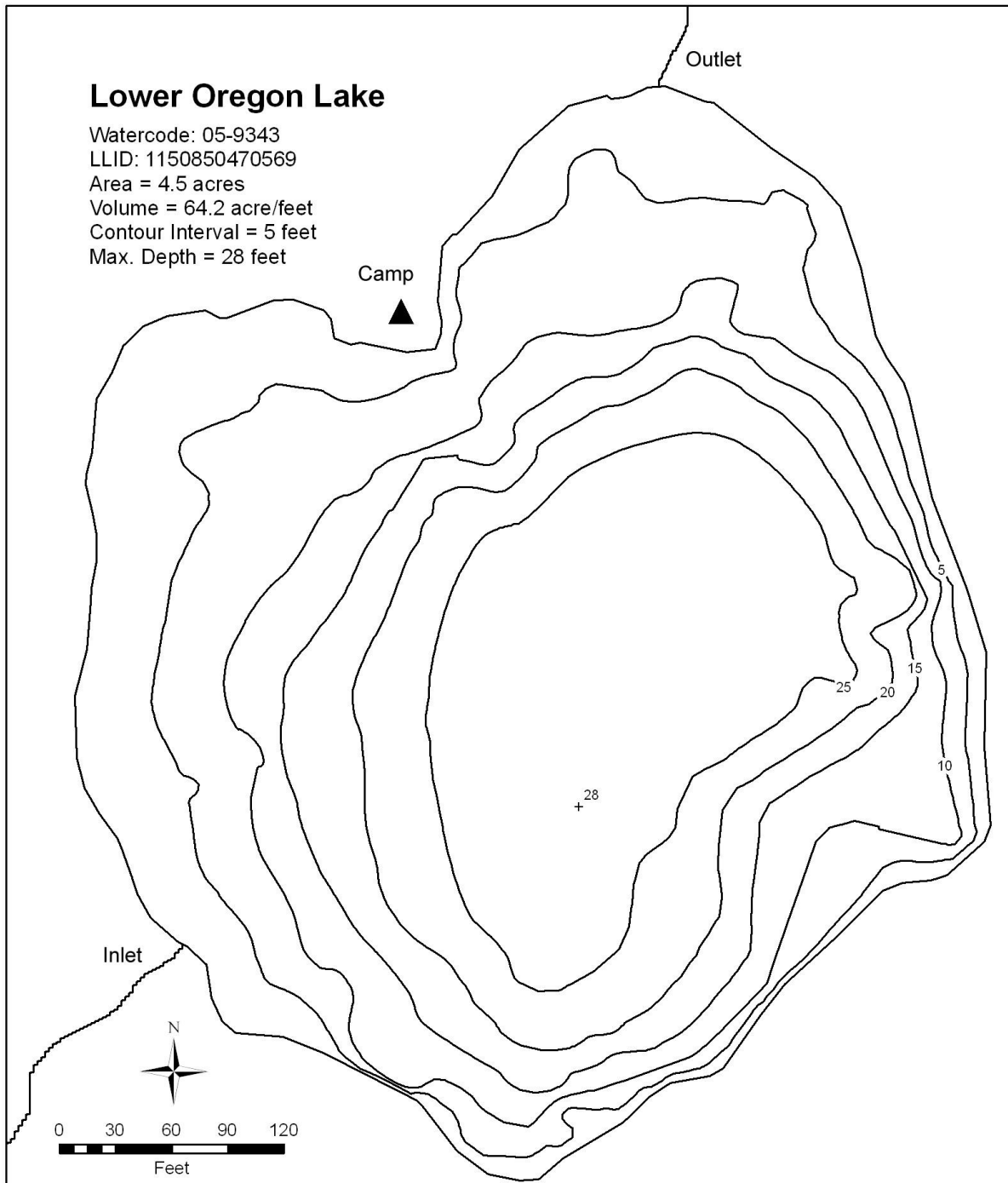
LLID: 1150850470569

Area = 4.5 acres

Volume = 64.2 acre/feet

Contour Interval = 5 feet

Max. Depth = 28 feet



Data Source:
Depth and perimeter points collected with recreational
grade GPS unit and processed with ESRI ArcGIS 3D Analyst.
Map produced by:
Montana Fish, Wildlife & Parks
Information Management Unit
490 N. Meridian
Kalispell, Montana 59901
June 14, 2006

