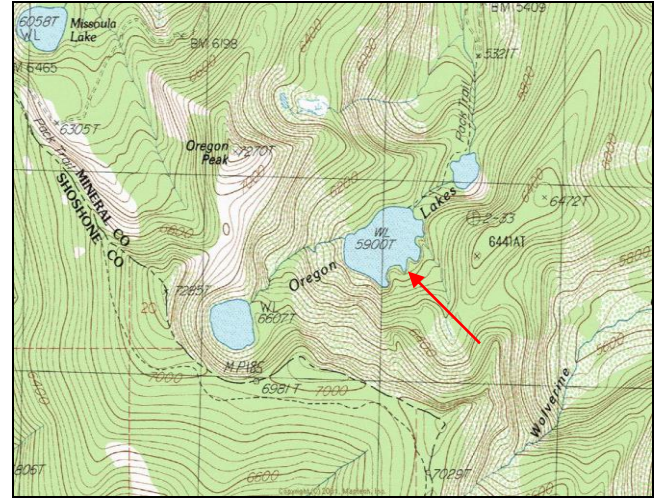


# Middle Oregon Lake



**Description:** Middle Oregon Lake is a large (26.6 acres), remote glacial trough lake located near the Idaho border in the Cedar Creek drainage at 5,900 ft elevation. It is the second of three lakes in the Oregon Lakes chain. The lake lies on the Lolo National Forest (Superior Ranger District).

**Location:** T15N, R27W, Sections 13, 14; Latitude N47.0536°, Longitude W115.0910°; Nearest Town: Superior, MT

**Access:** Access to Middle Oregon Lake can most easily be obtained by taking USFS Road #320 (Cedar Creek Road) from Superior, Montana for ~19 miles. Opposite USFS road #7763 is a short (half-mile) road that goes south to the head of USFS Trail #109. Middle Oregon Lake lies less than 0.5 mile up this trail, just past Lower Oregon Lake.

**Campsites and Use:** Middle Oregon Lake lies in a semi-remote setting that receives moderate use for an alpine lake. There is a trail around much of the lake and multiple campsites with fire rings. 'Leave no trace' camping and recreating is encouraged.

**Angling Opportunity:** Middle Oregon Lake supports a brook trout population that has a high rate of natural reproduction. Brook trout harvest is encouraged. Shoreline topography and access lends well to shoreline angling from about half of the lake's perimeter.

**Stocking History:** Stocking records indicate that Middle Oregon Lake was stocked with brook trout in 1950. This is the only stocking record for this lake.

**Angling Pressure:** Estimated angling pressure from Montana state-wide mail surveys in 1995-2005 was moderate and averaged 103 angler-days per year.

**Other Nearby Lakes:** There are several other lakes near Middle Oregon Lake. Lower and Upper Oregon Lakes both lie within 0.5 mile. The lower lake is easily accessed by Trail #109, but the route to the upper lake requires off-trail hiking in steep and brushy terrain. Missoula Lake lies ~ 1 mile northwest of Middle Oregon Lake and is accessed via a short trail from a USFS campground located on USFS Road #320 near the Idaho border. The Bonanza Lakes are three miles northwest of Middle Oregon Lake and can be accessed either off the Stateline National Recreation Trail (#738) above Missoula Lake or by taking USFS Road #7763 and Trail #616.



**Montana Fish,  
Wildlife & Parks**

## Middle Oregon Lake

Watercode: 05-9344

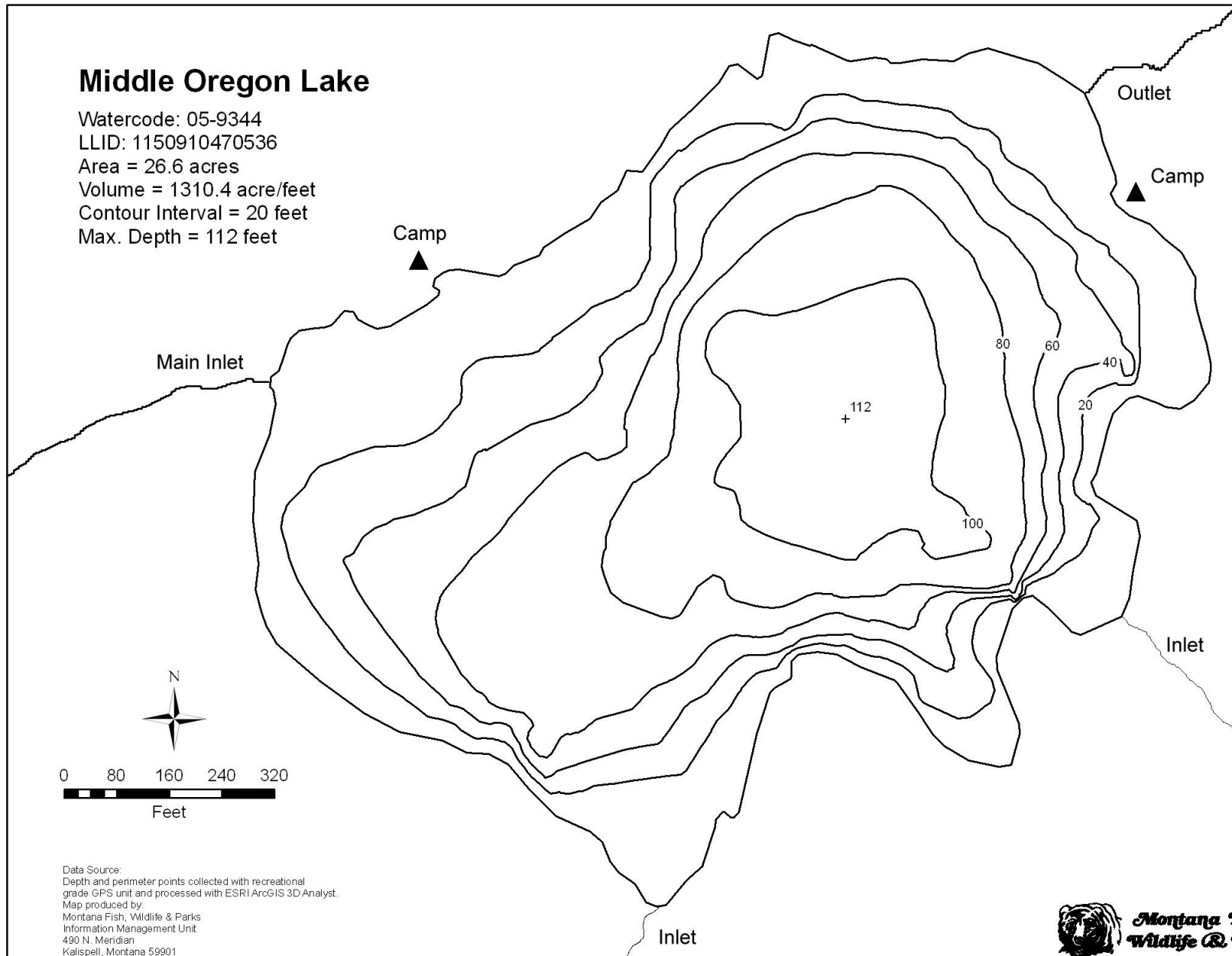
LLID: 1150910470536

Area = 26.6 acres

Volume = 1310.4 acre/feet

Contour Interval = 20 feet

Max. Depth = 112 feet



Data Source:  
Depth and perimeter points collected with recreational  
grade GPS unit and processed with ESRI ArcGIS 3D Analyst.  
Map produced by:  
Montana Fish, Wildlife & Parks  
Information Management Unit  
490 N. Meridian  
Kalispell, Montana 59901  
June 14, 2006



**Montana Fish,  
Wildlife & Parks**