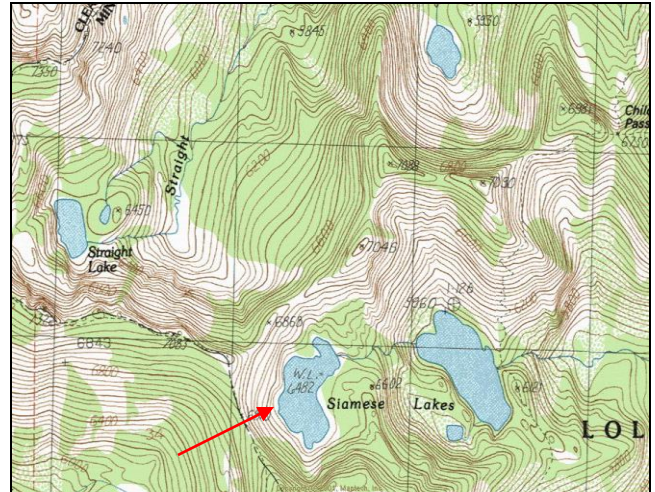


# Upper Siamese Lake



**Description:** Upper Siamese Lake is a large (25.7 acre), remote glacial cirque lake located in the West Fork Fish Creek drainage at 6,482 ft elevation. The lake lies on the Lolo National Forest (Ninemile Ranger District) in the proposed Great Burn Wilderness Area.

**Location:** T13N, R26W, Section 29; Latitude N46.8536°, Longitude W114.9220°; Nearest: Alberton, MT

**Access:** Upper Siamese Lake can most easily be accessed by taking Fish Creek Road (USFS road #343) from Interstate Highway 90. Then follow the West Fork of Fish Creek on USFS Road #7750 until you get to the campground and USFS outpost (Clearwater Crossing) at the end of the road. From here, there are two options. One is to take the North Fork Fish Creek Trail (#103) for ~ 0.7 miles, then Trail #99 (Straight Creek Trail) west-southwest for ~ 8 miles to Chilcoot Pass and the junction with Trail #114. Lower Siamese Lake lies 1.1 miles up this trail and the upper lake is another ~0.5 mile on an unofficial trail. The other option would be to take USFS Trail #101 (West Fork Fish Creek Trail) southwest 3.5 miles to Trail #510. Go west on Trail #510 for ~ 6.5 miles to Chilcoot Pass, then take Trail #114 as mentioned above. These routes offer a good opportunity to hike a loop from Clearwater Crossing.

**Campsites and Use:** Upper Siamese Lake lies in a remote setting that sees light use. The lakeshore has several campsites with fire rings. 'Leave no trace' camping and recreating is essential in this area as it is proposed wilderness.

**Angling Opportunity:** Upper Siamese Lake supports a population of westslope cutthroat trout with a moderate level of natural reproduction. Shoreline topography and access lends well to shoreline angling for approximately half of the lake's perimeter. Some portions of the lakeshore are very steep and rocky. Stocking has been discontinued as the population appears to be self-sustaining.

**Stocking History:** Upper Siamese Lake has been stocked only with westslope cutthroat trout since 1969. There is no record of the lake having ever been stocked prior to 1969.

**Angling Pressure:** Estimated angling pressure from Montana state-wide mail surveys in 1995-2005 was low and averaged 41 angler-days per year.

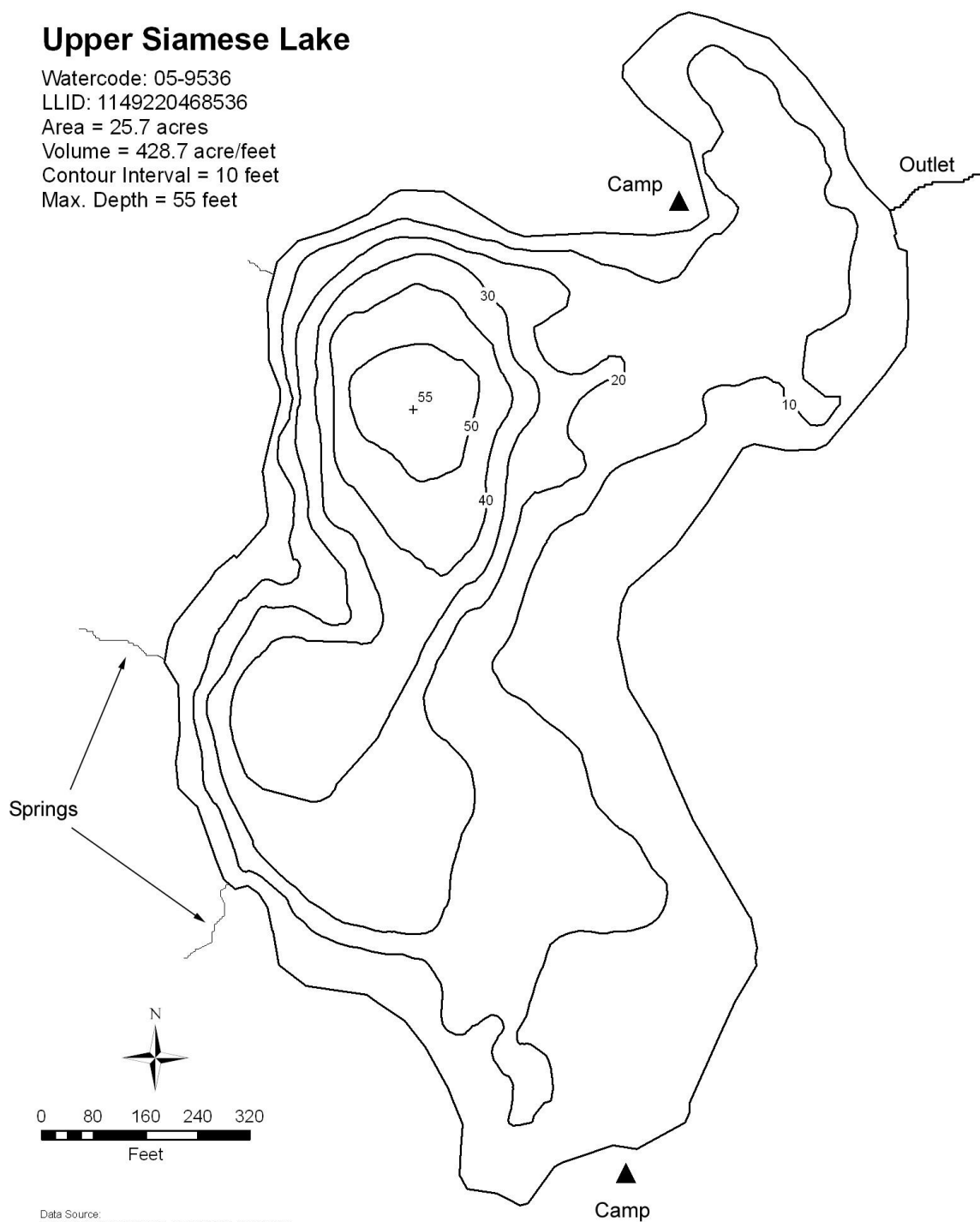
**Other Nearby Lakes:** There are several other lakes near Upper Siamese Lake. Getting to them will require off-trail hiking over steep terrain. Lower Siamese Lake is ~ 0.5 mile east of the upper lake and will likely be passed when traveling to the upper lake. Harrington Lake is ~ 1 mile north-northeast of Upper Siamese Lake. The easiest route to access it is to return to Trail #99 and then hike off-trail up the drainage to the lake from below. Straight Lake is ~ 1 mile northwest of Upper Siamese Lake. Accessing it will also require off-trail hiking over steep terrain.



Montana Fish,  
Wildlife & Parks

## Upper Siamese Lake

Watercode: 05-9536  
LLID: 1149220468536  
Area = 25.7 acres  
Volume = 428.7 acre/feet  
Contour Interval = 10 feet  
Max. Depth = 55 feet



Data Source:  
Depth and perimeter points collected with recreational  
grade GPS unit and processed with ESRI ArcGIS 3D Analyst.  
Map produced by:  
Montana Fish, Wildlife & Parks  
Information Management Unit  
490 N. Meridian  
Kalispell, Montana 59901  
June 14, 2006

