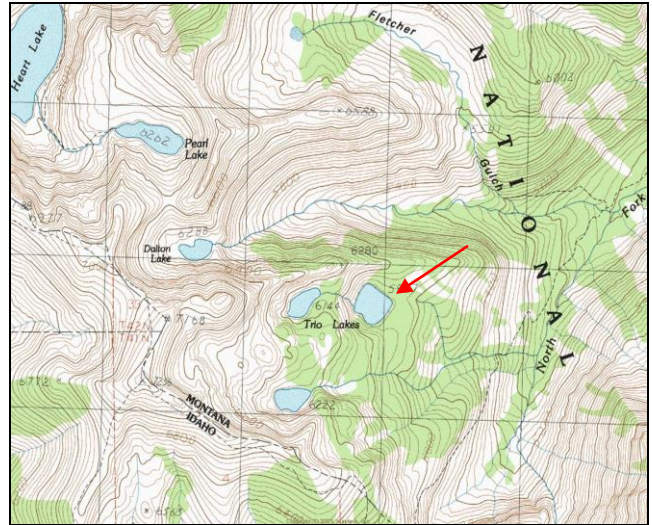


# Lower Trio Lake



**Description:** Lower Trio Lake is a moderately sized (14.0 acres), remote forested cirque lake located near the Idaho border in the North Fork Fish Creek drainage at 5,827 ft elevation. The lake lies on the Lolo National Forest (Ninemile Ranger District) in the proposed Great Burn Wilderness Area.

**Location:** T14N, R26W, Section 31; Latitude N46.9346°, Longitude W114.9380°; Nearest: Superior, MT

**Access:** Access to Lower Trio Lake can be obtained by taking USFS Rd #250 (Trout Creek Road) from Superior, MT. From USFS Road #250, there are two options to hike. One option is to hike USFS Trail #171 to Heart Lake, then Trail #175 past Pearl Lake, to Trail #738. Hike southeast on Trail #738 ~ 1 mile to the saddle from which you can see Upper Trio Lake. Descend off-trail to Upper Trio Lake. Near the outlet of Upper Trio Lake, you will find a trail that runs east, then north, to Lower Trio Lake. The other option is to take Trail #738 (Stateline National Recreation Trail) east-southeast, along the Idaho border, from the top of Hoodoo Pass (USFS Road # 250) and follow the same directions from near Dalton Lake. Both routes are between 6 and 7 miles hiking distance, with moderate difficulty.

**Campsites and Use:** Lower Trio Lake lies in a remote setting that receives light use. However, there is a campsite near the outlet. 'Leave no trace' camping and recreating is essential in this area as it is proposed wilderness.

**Angling Opportunity:** Lower Trio Lake supports a self-sustaining rainbow trout population that is supplemented with stocked westslope cutthroat trout. Shoreline topography and access lends well to shoreline angling from ~ 50% of the lake perimeter.

**Stocking History:** Lower Trio Lake has been stocked only twice; rainbow trout in 1953 and cutthroat trout in 1950. In the future, Lower Trio Lake will likely be stocked periodically with westslope cutthroat trout.

**Angling Pressure:** Estimated angling pressure from Montana state-wide mail surveys in 1995-2005 was low and averaged 41 angler-days per year.

**Other Nearby Lakes:** There are several other lakes nearby that lie in the upper Trout Creek and North Fork of Fish Creek drainages. Upper Trio Lake is 0.4 mile southwest of Lower Trio, and there is an un-official trail between the two lakes. Middle Trio Lake lies < 0.2 mile west of Lower Trio Lake, but there is no trail to it and it is fishless. Heart, Pearl, and Dalton Lakes are all 1-2 miles northwest of Lower Trio Lake. Accessing them will likely require ascending to the Stateline Trail (#738), then hiking northwest to Trail #175 which passes near all three.



## Lower Trio Lake

Watercode: 05-9696

LLID: 1149380469346

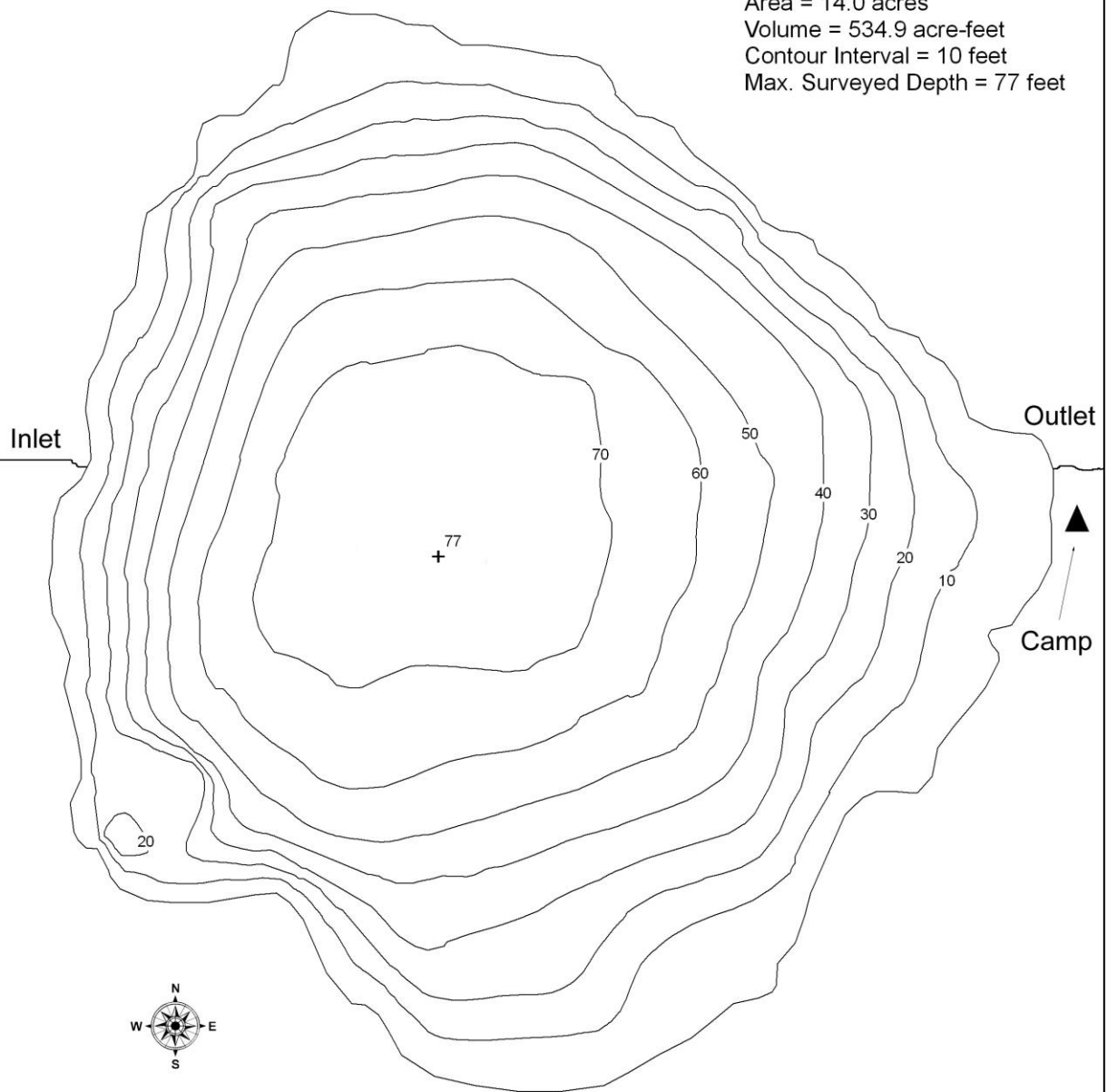
Survey Date:

Area = 14.0 acres

Volume = 534.9 acre-feet

Contour Interval = 10 feet

Max. Surveyed Depth = 77 feet



Data Source:  
Depth and perimeter points collected with recreational  
grade GPS unit and processed with ESRI ArcGIS 3D Analyst.  
Map produced by:  
Montana Fish, Wildlife & Parks  
Information Management Unit  
490 N. Meridian  
Kalispell, Montana 59901  
November 3, 2006

