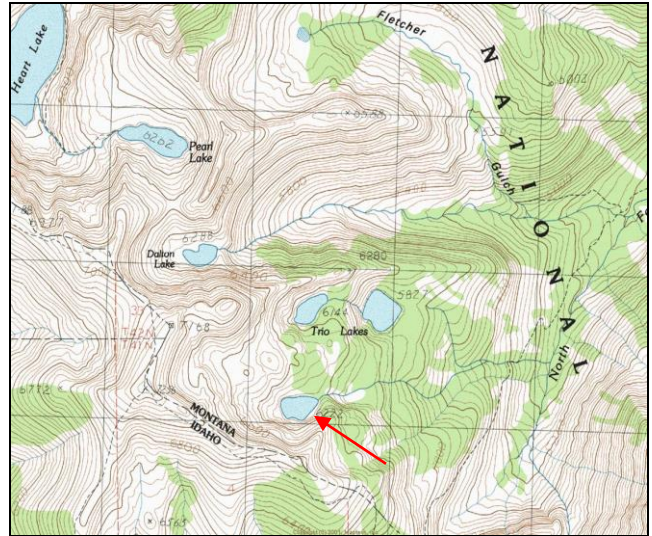


Upper Trio Lake



Description: Upper Trio Lake is a small (8.8 acres), remote glacial cirque lake located near the Idaho border in the North Fork Fish Creek drainage at 6,222 ft elevation. The lake lies on the Lolo National Forest (Ninemile Ranger District) in the proposed Great Burn Wilderness Area.

Location: T14N, R27W, Section 36; Latitude N46.9290°, Longitude W114.9460°; Nearest Town: Superior, MT

Access: The easiest way to access Upper Trio Lake is to take USFS Rd #250 (Trout Creek Road) from Superior, MT. From USFS Road #250, there are two options to hike. One option is to hike USFS Trail #171 to Heart Lake, then Trail #175 past Pearl Lake, to Trail #738. Hike southeast on Trail #738 ~ 1 mile to the saddle from which you can see Upper Trio Lake. Descend off-trail to Upper Trio Lake. The other option is to take Trail #738 (Stateline National Recreation Trail) east-southeast, along the Idaho border, from the top of Hoodoo Pass (USFS Road # 250) and follow the same directions from near Dalton Lake. Both routes are between 6 and 7 miles hiking distance, with moderate difficulty.

Campsites and Use: Upper Trio Lake lies in a remote setting that receives light use. However, there is a trail around much of the lake, and multiple campsites with fire rings. 'Leave no trace' camping and recreating is essential in this area as it is proposed wilderness.

Angling Opportunity: Upper Trio Lake supports a self-sustaining brook trout population and brook trout harvest is encouraged. Shoreline topography and access lends well to shoreline angling from ~ 60% of the lake perimeter.

Stocking History: Although brook trout have evidently been introduced, there are no stocking records for Upper Trio Lake. There are no plans to stock Upper Trio Lake in the future.

Angling Pressure: Estimated angling pressure from Montana state-wide mail surveys in 1995-2005 was low and averaged 24 angler-days per year.

Other Nearby Lakes: There are several other lakes nearby that lie in the upper Trout Creek and North Fork of Fish Creek drainages. Lower Trio Lake is 0.4 mile northeast of Upper Trio Lake and there is an un-official trail between the two lakes. Middle Trio Lake is ~ 0.3 mile north of Upper Trio Lake, but there is no trail to it and it is fishless. Heart, Pearl, and Dalton Lakes are all 1- 2 miles northwest of Upper Trio Lake. Accessing them will likely require ascending to the Stateline Trail (#738), then hiking northwest to Trail #175, which passes near all three.



**Montana Fish,
Wildlife & Parks**

Upper Trio Lake

Watercode: 059-698

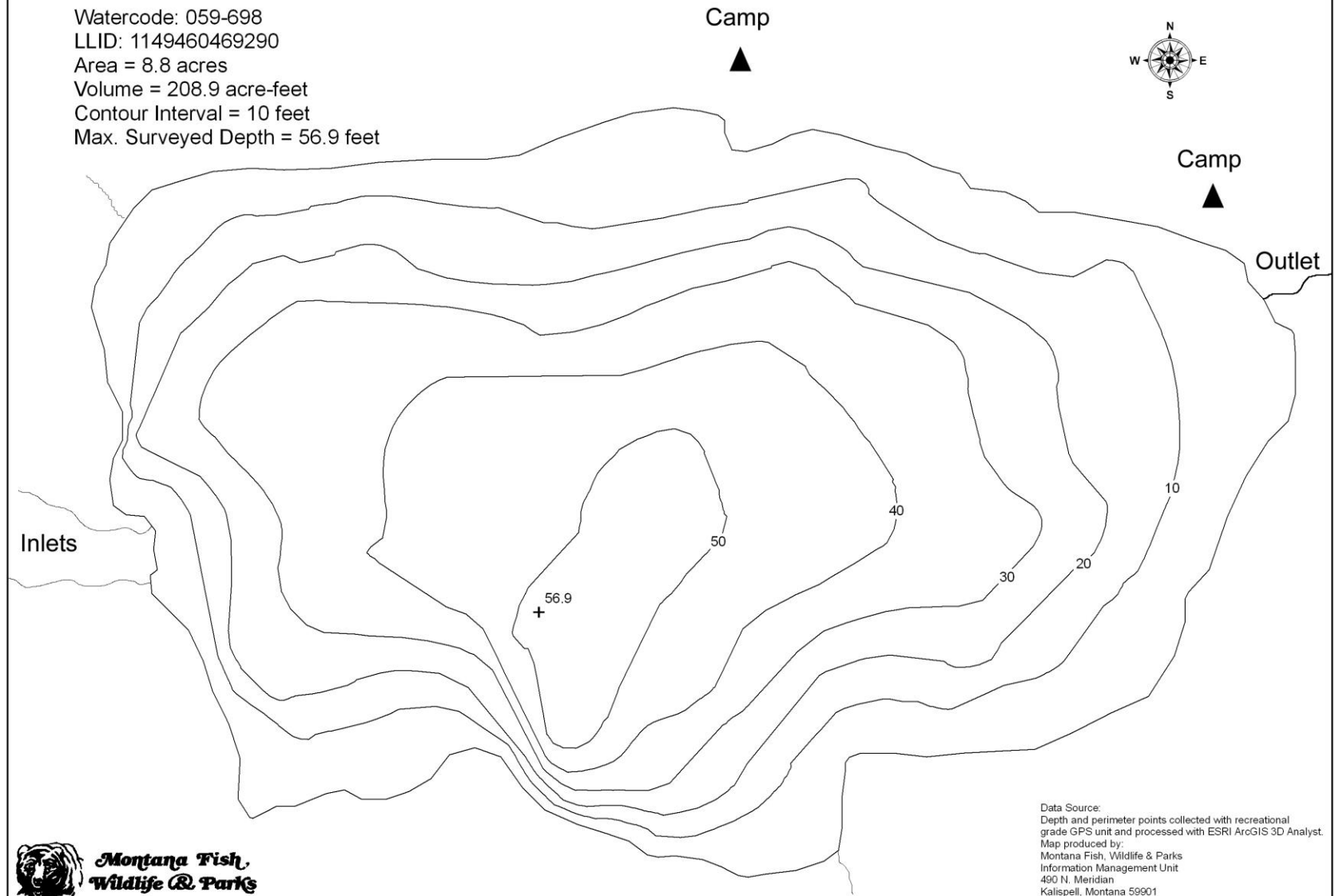
LLID: 1149460469290

Area = 8.8 acres

Volume = 208.9 acre-feet

Contour Interval = 10 feet

Max. Surveyed Depth = 56.9 feet



**Montana Fish,
Wildlife & Parks**

Data Source:
Depth and perimeter points collected with recreational
grade GPS unit and processed with ESRI ArcGIS 3D Analyst.
Map produced by:
Montana Fish, Wildlife & Parks
Information Management Unit
490 N. Meridian
Kalispell, Montana 59901
November 3, 2006