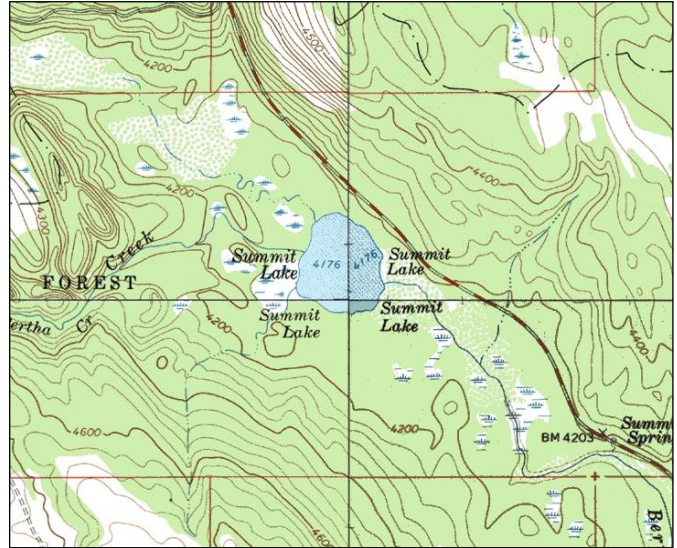


# Summit Lake



**Description:** Summit Lake is a small (28.4 acres), shallow (< 8 ft max depth) glacial pothole lake located ~ 15 miles north of Seeley Lake at 4,176 ft elevation near the Clearwater-Swan drainage divide. The lake supports wild fish populations, but does not offer substantial fishery value. The lake is a popular location for wildlife viewing and often supports nesting common loons.

**Location:** T19N, R16W, Section 27; Latitude N47.37617°, Longitude W113.62665°  
Nearest Town: Seeley Lake, MT. Surrounding land ownership: Lolo National Forest (Seeley Lake Ranger District)

**Access:** Summit Lake can be accessed via a short non-motorized foot trail that leads directly from a pull-out (Summit Lake Overlook) on MT Highway 83 located ~0.5 mile south of the Clearwater-Swan Drainage divide.

**Campsites and Use:** Summit Lake receives minimal use despite its accessibility from the highway. There are two informal campsites near the lake, but no trail has been established around the lake perimeter. Motorized watercraft are prohibited on the lake, with the exception of those powered by electric motors.

**Angling Opportunity:** Summit Lake supports a sparse westslope cutthroat population that likely receives natural recruitment from Bertha Creek. Longnose suckers and pumpkinseed sunfish are also present, but overall fishing opportunity is limited.

**Stocking History:** Stocking records indicate Summit Lake was stocked with kokanee, westslope cutthroat trout and arctic grayling in the period between 1939 and 1970. No subsequent stocking has occurred or is planned due to limited past success.

**Angling Pressure:** No angling pressure estimates are available for Summit Lake. Although the lake is a popular destination for wildlife viewing, angler use is assumed very light based on anecdotal observations and low fishery quality.

**Other Nearby Lakes:** Summit Lake is located approximately 2 miles north of Rainy Lake and 3 miles west of Clearwater Lake. Colt, Pierce, and Alva Lakes are also located nearby (within 4 miles) and are readily accessible.

## Summit Lake: Biological & Physical Information

**Date Sampled:** 6/9/2011

**Fish Species Present:** Westslope Cutthroat Trout,

Longnose Sucker, Pumpkinseed

**Size Range Captured (WCT):** 6.9-7.4 in (174-189mm)

**Trout Condition (Wr) (WCT):** 87 (low)

**Trout Diet Composition (WCT) (6/9/2011):** No data

**Juvenile Abundance:** WCT – low

**Management Objectives:** Not managed for fishery values

**Currently Stocked:** No    **Last Stocked:** 1970

**Amphibians Observed:** Columbia spotted frogs (adults)

**Sampling Methods:** Sinking Gill Net

**Gill Net Catch Rate (WCT):** 0.05 trout/net/hr (very low)

**Natural Recruitment (WCT):** Low

**Inlet/Outlet Spawning Habitat:** Limited

**Species:** Arctic Grayling    **Recommended Frequency:** None

**Elevation:** 4,176 ft

**Surface Area:** 28.4 acres

**Volume:** 123.2 acre-ft

**Max Depth:** 8 ft

**Secchi Depth:** Unlimited (8ft)

**PH:** 8.1

**Conductivity:** 38.5  $\mu$ s

**TDS:** 30.7

**Aspect:** South

### Summit Lake

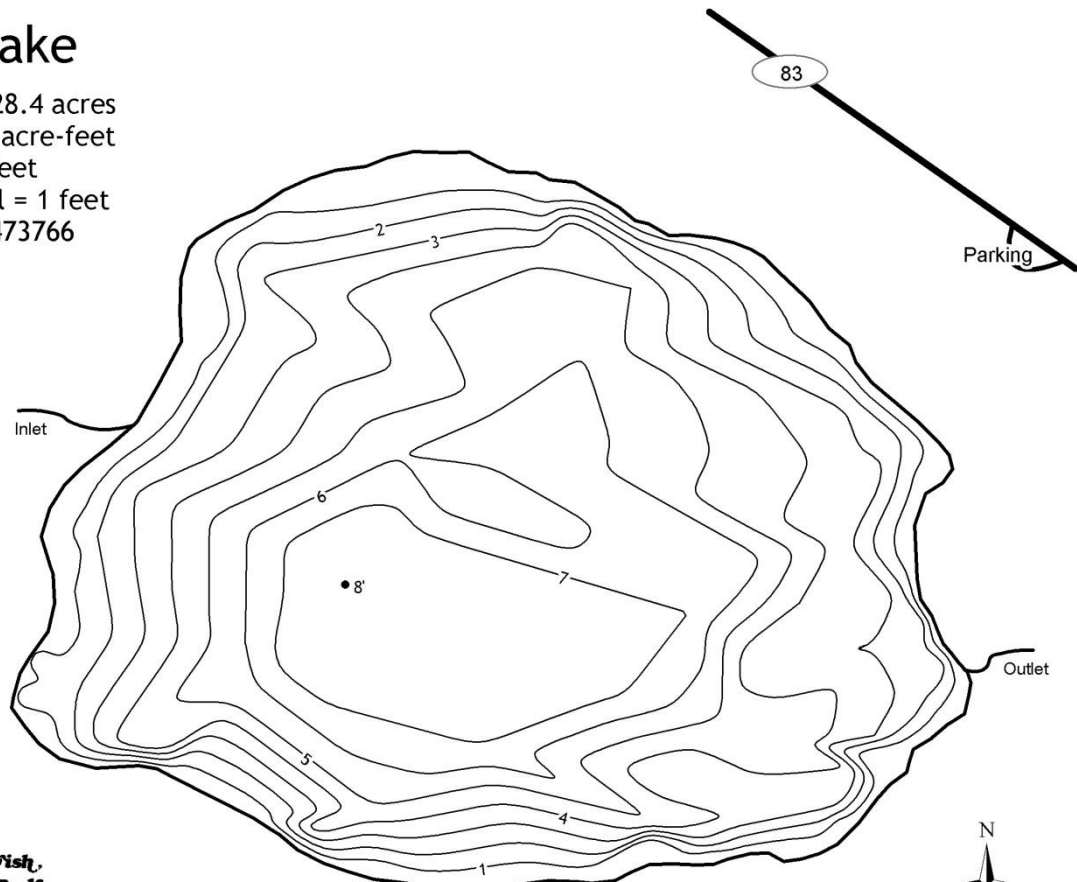
Surface Area = 28.4 acres

Volume = 123.2 acre-feet

Max Depth = 8 feet

Contour Interval = 1 feet

LLID = 1136254473766



Map and 1 foot contours produced in ArcGIS  
using 3-D Analyst from field data collected 07/05/2011.  
Montana Fish, Wildlife & Parks  
Helena, MT  
ISR 11617 - 12/02/2011 - asp