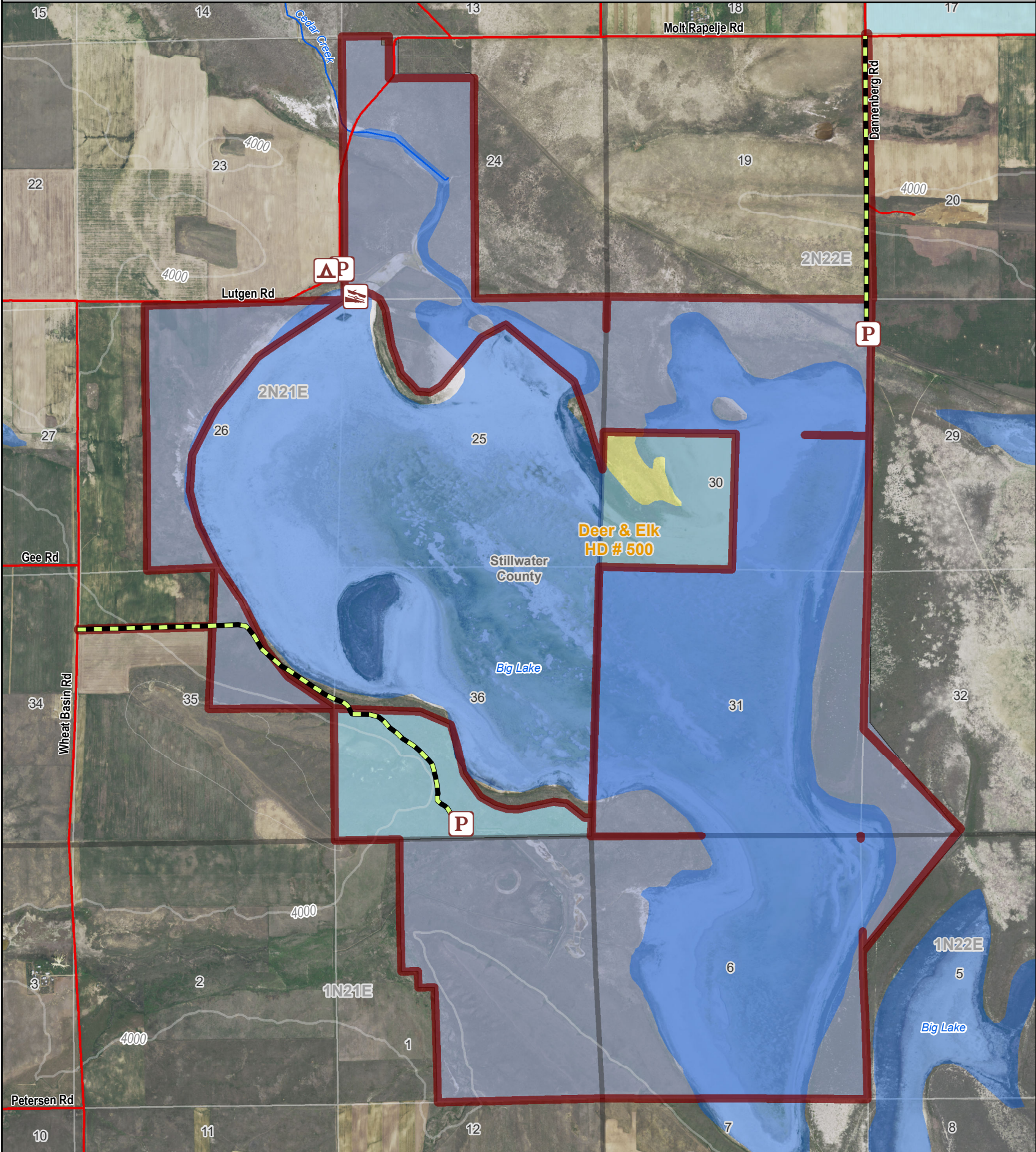
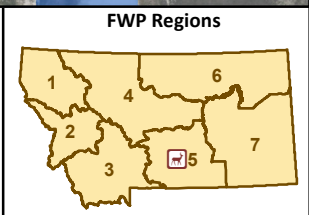


WMA Rules - See Reverse Page



	Boat Launch		Parking Area		Public Road
	CAMPSITE		Access Road		BLM
	WMA Boundary		State Lands		MT Fish, Wildlife & Parks
	Hunting Districts (Deer, Elk, Lion)				

282953.pdf  
Date: 6/25/2020



# Big Lake WMA

Visit <http://fwp.mt.gov/fishAndWildlife/wma> for more information

## WMA Rules

1. Open to recreational use yearlong.
2. All motorized vehicles must stay on authorized roads and parking areas.
3. Motorized watercraft allowed for lawful hunting purposes only.
4. Camping allowed only in designated camping area.
5. No target shooting or clay bird shooting allowed.
6. Trapping allowed by written permission only. Contact the Billings FWP office for permission.
7. No Fireworks. No Campfires.
8. No littering. Pack in. Pack out.
9. Open to all FWP Commission established hunting seasons unless specifically closed or restricted as noted in Hunting Regulations.



### REGION 5 OFFICE

2300 Lake Elmo Drive, Billings, MT 59105  
Phone: (406) 247-2940  
M - F, 8AM - 5PM (excluding holidays)

Revised 6.5.2020

**REPORT VIOLATIONS: 1-800-TIP-MONT**