



Fisheries Division
490 N Meridian Rd.
Kalispell, MT 59901
(406) 214-9010
December 21, 2020

Mike Jakober
South Zone Fish Biologist
Bitterroot National Forest
Darby, MT 59829

Dear Mr. Jakober:

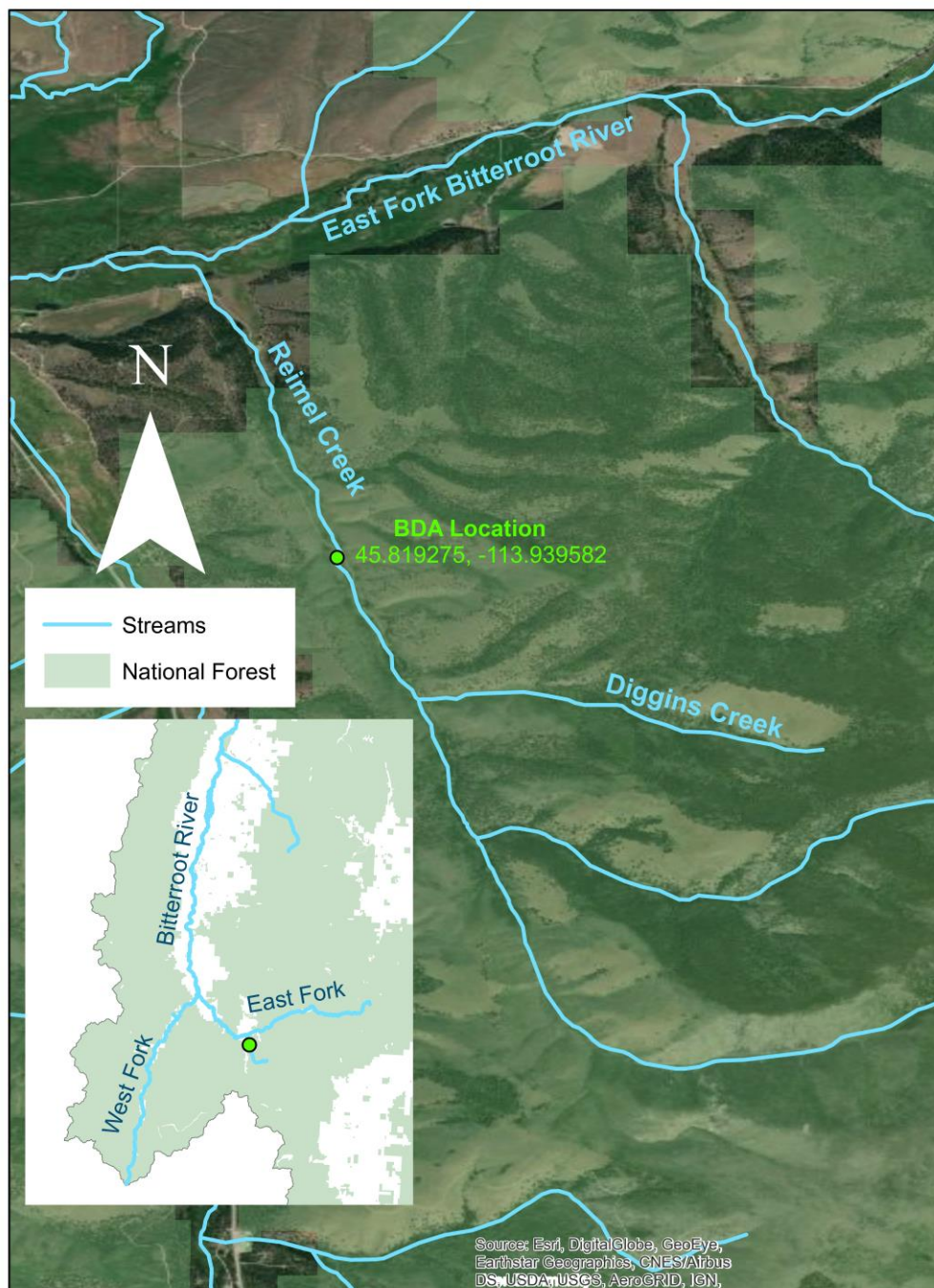
The enclosed is a short description of work completed on Reimel Creek, Bitterroot National Forest, Montana. In conjunction with a Utah State University & FWP research project examining trout passage at beaver dams in the East Fork Bitterroot River drainage, we installed 2 beaver dam analogue (BDA) structures to demonstrate construction techniques to members of the Bitter Root Water Forum, a local watershed group. The two structures were installed on July 25th, 2020 at 45.819275, -113.939582, approximately 250 feet above the Forest Road 727 crossing. Initial plans to build a third BDA on Diggins Creek, a tributary to Reimel, were not carried out.

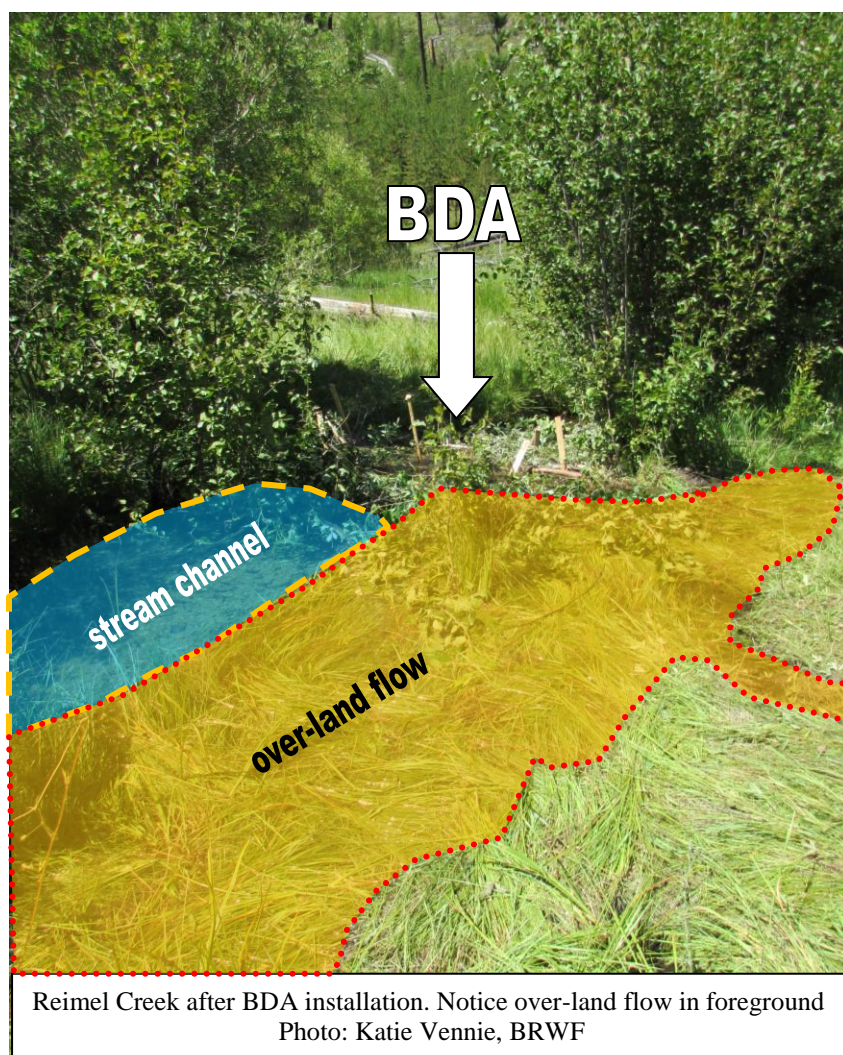
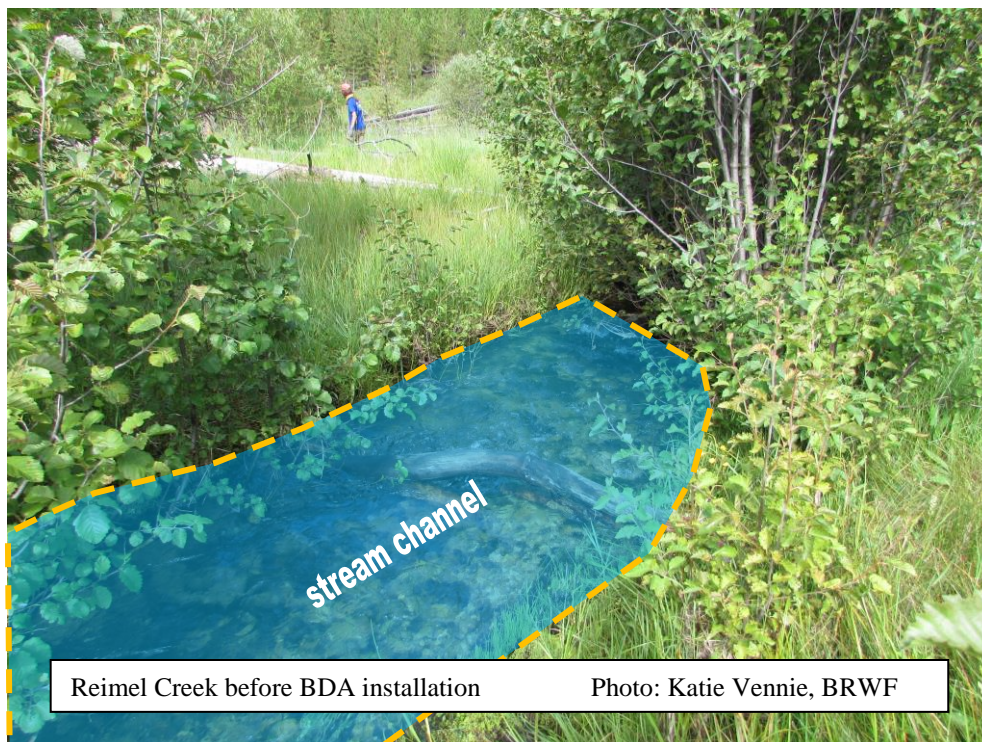
Local materials such as willow branches, large pieces of wood, and root wads were sourced on-site and were supported by pounding untreated, wooden garden stakes into the finished structure. The two BDAs immediately impounded water and diverted flow onto the floodplain, a sign of initial success. As such, we consider the demonstration to have been successful and hope the Bitter Root Water Forum gained useful insights for future stream restoration work. While the long-term persistence of these structures is not a priority due to their demonstrative intent, we do plan to evaluate long-term persistence sometime next year to see if the garden stakes, a last-minute replacement for preferred wooden fence posts, are useful on a small stream such as Reimel Creek. Attached is a map and pictures of the BDAs.

Thank you for your help in streamlining the permitting process with the Forest Service.

Sincerely,

Niall Clancy
Fisheries Scientist







Water Forum staff and USU graduate student building the 1st BDA
Photo: Katie Vennie, BRWF